

# The Dentalaire Prestige Dental Station

Add Prestige to your Dental Suite!

## DENTALAIRE

Meeting and Exceeding the Needs of Veterinary Dentistry since 1988  
www.DentalaireProducts.com  
800-866-6881



**The Most Easily Maintained Dental Station in the World.** Simply lift the top for internal storage. Replaceable parts are accessed under the large internal storage tray.

- Asepsis design with controls located on side panel
- Large work area with internal storage
- High speed fiber optic handpiece with push button turbine
- Light weight, low speed, lube free handpiece
- Built in Piezo Scaler with LED light source
- Three way syringe (air, water, and spray)
- Dual filtration system, cleanest air
- Virtually soundless compressor
- Built in dual water system
- Telescopic height adjustment



**NEW! Scaler LED Light**

- Added to light weight Piezo Scaler Handpiece
- Assists in cleaning hard to see places
- Easy on the eyes

*Air Sourced Dental Stations*

*Portable Dental Stations*

*Silent Air Compressors*

*Silent Air Oil-Less Compressors*

*Hand Instruments*

*X-Ray Generators*

*Digital Dental X-Ray Systems*

*Natural Bone Graft Material*

*Restorative Products*

*Endodontic Equipment / Supplies*

*Consumable Supplies*

*Much More*



# DENTALAIRE



Dentalaire has been providing our clients with quality products since 1988. Our friendly and dedicated staff understands the needs of today's veterinary practice and are eager to help.

Our full line of products makes it easy to order and saves you time as well as money.

Good people, great service and quality products is what we're all about.

**17150 Newhope Street, Suite 407 • Fountain Valley, CA 92708**

**1-800-866-6881**

*The Single Source for All Your Dental Needs*

## Limited Warranty

DENTALAIRE warrants its products to be free from defects in materials and workmanship only. No other warranties are expressed or implied.

### Air Compressors & Portable Dental Units

All compressors and portable dental units including wall mounted and countertop dental units are warranted for one (1) year. EXCEPTION: The Prestige Dental Station is warranted for two (2) years respectively. High Speed Turbines are warranted for six (6) months. High Speed & Low Speed Handpieces are warranted for one (1) year. Ultrasonic Scalers are warranted for two (2) years. Sonic Air Scaler Handpieces are warranted for one (1) year. True Seal (Snap on and Screw type) prophylaxis angles are warranted for one (1) year. Warranty is limited to repair, parts or replacement of item by Dentalaire. All other warranties are described in individual product description.

The Corix X-Ray Generator, both mobile and wall mounted are warranted for one year for workmanship parts only. The BioRay Digital Dental System is warranted for 2 years.

### Instruments

All DENTALAIRE and Vetcare Dental Instruments are warranted for one (1) year. If any of our instruments break, chip or bend during any dental procedure, Dentalaire will replace the instrument at no charge. Defective item must be returned to us for exchange. Shipping is the responsibility of the customer.

ABOVE WARRANTIES ARE VOID IF ITEMS ARE CARELESSLY USED, IMPROPERLY INSTALLED, IMPROPERLY STERILIZED AND/OR MIS-USED. NO CLAIM FOR LABOR OR CONSEQUENTIAL DAMAGES WILL BE ALLOWED.

Any discrepancies in your order must be reported within 10 days of receipt of order.

### Terms

Net 30 days on approved accounts. A service charge of 1 ½ % per month will be charged on past due accounts. All prices are subject to change without notice. Freight terms are FOB Fountain Valley, California; freight charges are prepaid and added to customer invoice. Items may not be returned without factory authorization. There will be a 25% restock handling fee on returned items, unless deemed defective. Authorized items must be returned within 30 days of receipt. Returned items must be shipped prepaid.

When placing your order please include purchase order number, product number, description and quantity. Also include shipping date required and preferred method of shipping.

Opened handpieces and equipment may not be returned for credit, but will be repaired or replaced in accordance with manufacturer warranties. Please inspect all packages carefully prior to opening.

## Table of Contents

What's New at Dentalaire?.....	3	Burs, Diamond Discs and Scaling Tips.....	27-28
Curettes and Scalers.....	4-6	Q & A on Dental Stations.....	29
Instrument Sets.....	7-8	Equipment Comparison Chart.....	30
Woodward Extraction Kit.....	8	Dental Stations / Compressors.....	31-34
Elevators and Levitators.....	9-11	Dental Vacuum Systems.....	34
Sharpening Stones.....	11	Welch Allen LED Light.....	35
Extraction Forceps and Scissors.....	12	Scaler / Micromotor combination.....	35
Rodent Dental Instruments.....	13	Electrosurgical Unit.....	35
Prophy Products.....	14	Ultrasonic Scalers, Micromotors.....	36-37
Safety Products, Mouth Gags and Retractors...	15	Cavitron Inserts.....	37
Restorative Products.....	15-21	Dental X-Ray Products.....	38-43
Endodontic Products.....	22	Handpieces.....	43-44
Osteoallograft, Ossiflex Bone Graft Materials....	23-26	Sharpening System, Miscellaneous.....	45
Multi-Tier Stand.....	27	Continuing Education.....	46

## Whats new

Lighted Scaler



Prestige - Page 37

Prestige Dental Station



DTP00511 - Page 37

Electrosurgery Unit



DTP00805 - Page 35

Cocoon Spray Combo Scaler Polisher



DTP24484V - Page 35

P5 VET Booster Piezo Scaler



DTP00795 - Page 36

Autoclave Sanitary Bags



DTP11236 - Page 15

Osteoallograft Periomix



Page 25

Sitzman Shields



DTP01514 - Page 43

Diplomate Instrument Kits



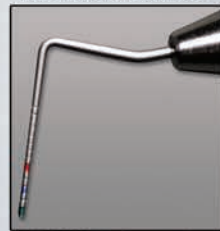
Page 7

Atraumatic Lip Retractor



DTP42258 - Page 15

Niemiec EXPRO



DTP11324 - Page 6

Multi-Tier Adjustable Stand



DTP00804 - Page 27

Wrap-Ease®



DTP61611 - Page 39  
 DTP61612 - Page 39

P5 Newtron LED



DTP00797 - Page 36



And Much More! .....

## HAND INSTRUMENTS FOR VETERINARY DENTISTRY

Understanding the purpose and use of hand instruments is basic to veterinary dental procedures. Each instrument is designed for a specific application from calculus removal to tooth extraction. The classification is determined by its use.

**CURETTES** are used to remove subgingival calculus, root planing and for curettage (removal of disease in the soft tissue of the periodontal pocket). They have one blade with two cutting edges. Both cutting edges may be used on the front and back of the tooth.



DTP11227 – Barnhart Curette 5/6



DTP11340 – McCalls 17/18 Curette



DTP11228 – Barnhart Curette 5/6 (Blue)



DTP11224 – Columbia 13/14

## HAND INSTRUMENTS FOR VETERINARY DENTISTRY

**PERIODONTAL PROBES AND EXPLORERS** are detection instruments. The probe is used for measuring the depth of periodontal pockets. The explorer is used to detect calculus.



DTP11390 – Explorer/Probe 1/23



DTP00012 – Perio-Probe, Single End 3-6-9-12



DTP00015 – Perio-Probe, Single End 3-6-9-12-15

**SCALERS** are used to remove dental deposits from tooth surfaces above the gum line.



DTP11278 – Tartar Sickle/Chisel (Gold)



DTP11276 – Sickle Scaler H6/H7 (Green)



DTP11275 – Sickle Scaler H6/H7 (Economy)

## HAND INSTRUMENTS FOR VETERINARY DENTISTRY

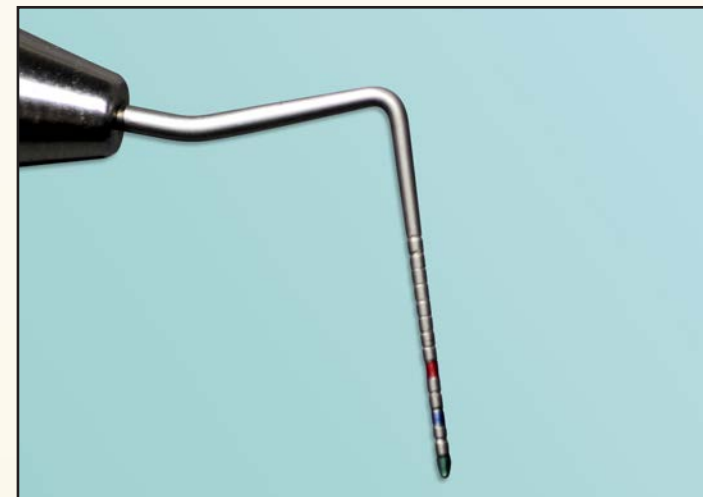
**GRACEY CURETTES** have only one cutting edge which is designed for deep subgingival calculus, root planing and for curettage of the periodontal pocket.



DTP11271 – Jacquette Feline Scaler 1/2 (Black) Double Ended



DTP11225 – Gracey 5/6 Curette



**NEW!** DTP11324 – Niemiec EXPRO, Color Coded



DTP11274 – Morse Scaler 0/00 (Violet) Double Ended



DTP11226 – Gracey 7/8 Curette Double Ended



DTP10545 – Dental Mouth Mirror Size # 3

Not pictured:  
DTP11277 – Tarter Scraper C/C and  
DTP11279 – Tarter Remover / Scraper

Meeting and Exceeding the Needs of Veterinary Dentistry since 1988  
[www.DentalaireProducts.com](http://www.DentalaireProducts.com) • 800-866-6881

**DENTALAIRE**

## DIPLOMATE APPROVED INSTRUMENT KITS

**DENTALAIRE** IS VERY PLEASED TO BRING YOU DIPLOMATE APPROVED INSTRUMENT KITS. **DENTALAIRE** enlisted the expertise of Veterinary Dental Diplomates to assist us in developing these specialized instrument kits. High quality instruments are available in either a standard **wallet** or an autoclavable stainless steel **cassette**.



- DTP10618 – Diplomate Perio Pack in DA **Wallet**  
 DTP11311 - Silk Gracey Curette #1/2  
 DTP11312 - Silk Gracey Curette #7/8  
 DTP11313 - Silk Gracey Curette #12/13  
 DTP11324 - Niemic EXPRO  
 DTP11315 - Silk Jacquette Scaler #U15/33  
 DTP11316 - Silk Mouth Mirror w/Handle



- DTP10620 – Diplomate Perio Surgery Pack in DA SS **Cassette**  
 DTP11324 - Niemic Expro  
 DTP11312 - Silk Gracey Curette #7/8  
 DTP11313 - Silk Gracey Curette # 12/13  
 DTP11317 - Silk Gracey Curette #1/2 After Five  
 DTP11318 - Silk Gracey Curette #7/8 After Five  
 DTP11319 - Silk Gracey Curette #12/13 After Five  
 DTP11320 - Silk Morse Scaler #0-00  
 DTP11315 - Silk Jacquette Scaler #U15/33  
 DTP11321 - Silk Kirkland Knife #15/16  
 DTP11322 - Silk Molt Curette #2/3  
 DTP11316 - Silk Mouth Mirror  
 DTP13107 - Adson-Brown Tissue Forcep 7X7  
 DTP13110 - LaGrange Scissor  
 DTP13108 - Scalpel Blade #3  
 DTP11325 - Needle Holder SM. Castroviejo w/ Scissor



- DTP10619 – Diplomate Feline Perio Pack in DA **Wallet**  
 DTP11311 - Silk Gracey Curette #1/2  
 DTP11318 - Silk Gracey Curette #7/8  
 DTP11319 - Silk Gracey Curette #12/13  
 DTP11324 - Niemic EXPRO  
 DTP11326 - Silk Jacquette Scaler #2S/3S  
 DTP11316 - Silk Mouth Mirror w/Handle



- DTP10616 – Diplomate Extraction Pack in DA SS **Cassette**  
 DTP13101 - Luxator Curved 1 mm Short Shank  
 DTP13102 - Luxator Curved 2 mm Short Shank  
 DTP13103 - Luxator Curved 3 mm Short Shank  
 DTP13104 - Luxator Curved 5 mm Short Shank  
 DTP13105 - Small Breed Extracting Forcep  
 DTP11322 - Molt Curette 2/3  
 DTP13107 - Adson Brown Tissue Forcep 7X7  
 DTP13108 - Scalpel Blade #3  
 DTP13109 - Olsen-Hegar Needle Holder 4.5



- DTP10617 – Diplomate Feline Extraction Pack in DA SS **Cassette**  
 DTP13101 - Luxator Curved 1 mm Short Shank  
 DTP13102 - Luxator Curved 2 mm Short Shank  
 DTP13103 - Luxator Curved 3 mm Short Shank  
 DTP13105 - Small Breed Extracting Forcep  
 DTP11322 - Molt Curette 2/3  
 DTP13107 - Adson-Brown Tissue Forcep 7X7  
 DTP13110 - La Grange Scissor  
 DTP11325 - Needle Holder SM. Castroviejo w/ Scissors

## SPECIAL "MINI" SERIES FOR SMALLER ANIMALS

### SHORT SHANK HAND INSTRUMENTS



- DTP11282 M5/6 Gracey 5/6  
 DTP11283 M2/3 Jacquette 2/3  
 DTP11284 M0/00 Morse 0/00  
 DTP11285 M6/7 Sickle Scaler H6/H7  
 DTP11286 M5/6 Barnhart 5/6  
 DTP11288 M15/16 Tartar Sickle/Chisel  
 DTP11287 Complete Set of 6

These hand instruments are ideal for feline dentistry, as well as for scaling the teeth of rodents. The shorter 3/4" shank allows for easier access to the mouth and gives you much better stability. This in turn will greatly reduce hand fatigue.

## COLOR CODED INSTRUMENTS



1.5" SHANK

- DTP11330 – Set of 6 w/Autoclavable Tray  
 Gracey Curette 5/6 Silver  
 Barnhart Curette 5/6 Blue  
 Morse Scaler 0/00 Violet  
 Sickle Scaler H6/H7 Green  
 Tartar Sickle/Chisel Gold  
 Jacquette Scaler 1/2 Black

With Free Instrument Tray

Note: Autoclave up to 250 degrees only on trays

## BASIC DENTAL INSTRUMENT SET-UP

DTP10612 – Includes all items listed (set of 6)



- Mouth Mirror  
 Probe/Explorer  
 Tartar Scraper  
 Scaler H6/H7  
 Gracey 7/8  
 Barnhart 5/6

With Free Instrument Tray

## WOODWARD EXTRACTION KIT

This extraction kit includes all the basic dental instruments required for extractions in dogs and cats. It was designed by Dr. Tony Woodward, DVM/AVDC from



Woodward Extraction Kit - DTP10613

Colorado Springs, CO. "This kit has the instrumentation for almost all your extraction needs."

- The kit contains the following items:** DTP10613  
**One** (set of 4) S/S Winged Elevators. The set includes 1-4mm. (1mm=DTP10341, 2mm=DTP10342, 3mm=DTP10343, 4mm=DTP10344) These are sharp and have a fine edge to them. They have a unique spoon shape that hugs the tooth and gives you some added leverage by using it in a side to side twisting or rocking motion.  
**One** 3mm Curved Luxator (DTP13101) and one 5mm Curved Luxator (DTP13104). These elevators are useful in medium to large-sized teeth. Mostly used in dogs. These are sharp and have a fine edge to them and sometimes will fit where the winged elevators won't.  
**One** pair of 7" Curved Serrated Dean Scissors (DTP30960). These are helpful in lengthening and trimming the gingival flar as well as cutting sutures in the mouth.  
**One** Molt 2-4 Perio Elevator (DTP10333). This is a double-ended instrument used for elevating gingival flaps in dogs and cats.  
**One** Small Rongeur Forceps, 4.5" (DTP10644). Used as an extraction forceps and bone contouring tool.  
**One** Straight Root Tip Pick (DTP10175). Useful for removing fractured root tips below the gumline.

## ELEVATORS

Straight Tip Elevators come with blades from 1mm-5mm wide which will cover all your needs except curved rooted teeth. SUPER SLIM tips are excellent for cats. MODIFIED TIPS are designed to guide it into the socket and cut the periodontal ligament. This prevents it from slipping out and causing damage to the gingival tissue. Makes elevation much easier.



Regular Tip



Modified Tip



Super Slim

DTP10331 – Feline Elevator



DTP20331 – Canine Elevator



Super Slim

DTP10331SM – Feline w/V Cut



DTP10330 – Std. 301 Elevator



DTP10226 – Std. 304 Elevator

## LEVITATORS

### MODIFIED TIPS

The single ended feline and canine levitators have a “V” cut into the end of the instrument. This helps guide the tip into the socket, thus preventing it from slipping, causing damage to the gingiva.

### CURVED INSTRUMENTS

Indispensable for extracting curved-root teeth (i.e. canine teeth and incisors). The curved tips are designed to follow the concave and convex curvatures of the teeth helping to prevent breaking the roots.



DTP00403  
Single Ended Canine  
(Curved)

DTP00027  
Single Ended Canine  
(Straight)



DTP00204  
Single Ended Feline  
(Curved)

DTP00028  
Single Ended Feline  
(Straight)

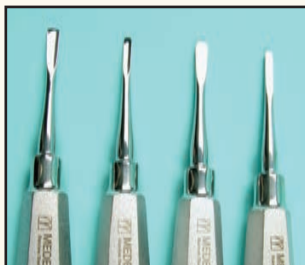
## SERRATED ELEVATORS

These elevators come highly recommended by Dr. Peter Emily. The serrations help to keep you from slipping or rolling off the root of the tooth. It does a great job in severing the periodontal ligament. It also helps grabbing the cementum of the tooth that is being sectioned.



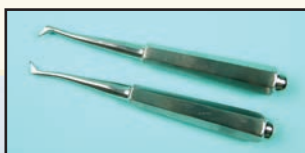
Comes in three convenient sizes.  
DTP10338 – Feline Serrated Elevator – Small  
DTP10340 – Mid-Sized Serrated Elevator – Medium  
DTP20332 – Canine Serrated Elevator – Large

## LUXATORS



These luxators feature a very thin edge and ergonomic bend, and are very useful when extracting medium to large size teeth.

1. DTP0730/1 – Straight 3mm
2. DTP0730/2 – Straight 5mm
3. DTP0730/3 – Curved 3mm
4. DTP0730/4 – Curved 5mm
5. DTP0730/5 – Luxators-Set of 4



DTP10361 – Cryer Elevator #30  
DTP10362 – Cryer Elevator #31

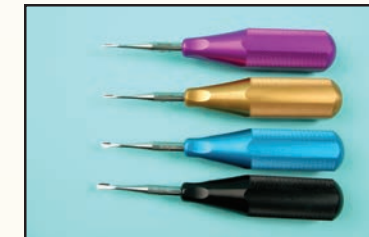
These elevators are helpful in removing the caudal teeth in dogs.

## WINGED ELEVATORS

“Winged Elevators” were designed and created by Dr. Robert Wiggs, DVM/AVDC. These elevators will help to make extractions easier in both dogs and cats. They are sharp and have a fine edge to them. All of the winged elevators have a unique spoon shape that hugs the tooth and gives the veterinarian some added leverage, by using it in a side to side twisting/rocking motion. They are also useful in between the teeth in the interdental space. These come in four styles: Original S/S (lightweight feel), Color Coded (aluminum, heavier feel) and Mini-Wings (for smaller hands). Short Shank SS Winged with shorter grip.



- DTP10341 – #1 (1mm) Original
- DTP10342 – #2 (2mm) Original
- DTP10343 – #3 (3mm) Original
- DTP10344 – #4 (4mm) Original
- DTP10345 – Set of Four with case
- DTP10328 – #6 (6mm) Original
- DTP10329 – #8 (8mm) Original



- DTP10347 – #1 (1mm) Color Coded Violet
- DTP10348 – #2 (2mm) Color Coded Gold
- DTP10349 – #3 (3mm) Color Coded Blue
- DTP10350 – #4 (4mm) Color Coded Black
- DTP10351 – Set of Four with case

- DTPRXSSET – Set of 4 USA Made Short Shank Winged Elevators
- DTPRX9001S – #1 USA Made Short Shank Winged Elevator
- DTPRX9002S – #2 USA Made Short Shank Winged Elevator
- DTPRX9003S – #3 USA Made Short Shank Winged Elevator
- DTPRX9004S – #4 USA Made Short Shank Winged Elevator

- DTPRXLSET – Set of 4 USA Made Winged Elevators
- DTPRX9001L – #1 USA Made Winged Elevator
- DTPRX9002L – #2 USA Made Winged Elevator
- DTPRX9003L – #3 USA Made Winged Elevator
- DTPRX9004L – #4 USA Made Winged Elevator
- DTP00300 – Case only

## ROOT TIP PICKS



- DTP10175 – Root Tip Pick #78 (Straight)
- DTP10176 – Root Tip Pick #79 (Left Angle)
- DTP10177 – Root Tip Pick #80 (Right Angle)
- DTP10178 – Root Tip Pick (set of 3)

Indispensable for removing small pieces of broken root tips.

## Dentalaire introduces Private Line of Prophy Products!

Same Ingredients as Major Manufacturers, Less Cost!

see page 14



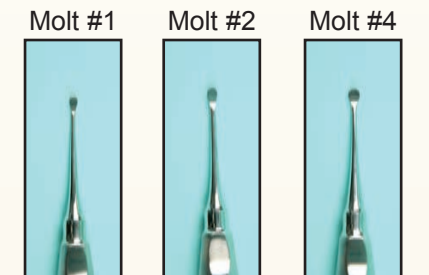
Winged Elevators

- #1 - Used for feline and root tips
- #2 - Used for feline and small dog
- #3 - Used for cat canine and dog teeth with medium sized roots
- #4 - Used for dog canine teeth and larger sized roots



- DTP10356 – #1 (1mm) “Mini”
- DTP10357 – #2 (2mm) “Mini”
- DTP10358 – #3 (3mm) “Mini”
- DTP10359 – #4 (4mm) “Mini”
- DTP10360 – Set of Four with case

## BONE CURETTES

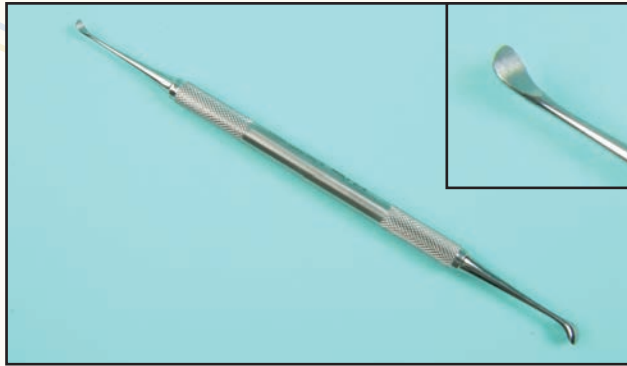


### Single Ended

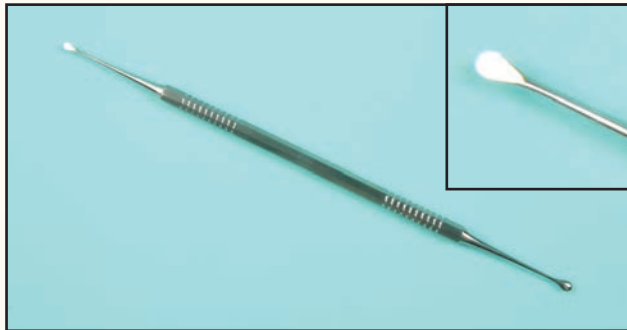
- DTP10352 – Molt #1
- DTP10353 – Molt #2
- DTP10354 – Molt #4

## PERIOSTEAL ELEVATORS

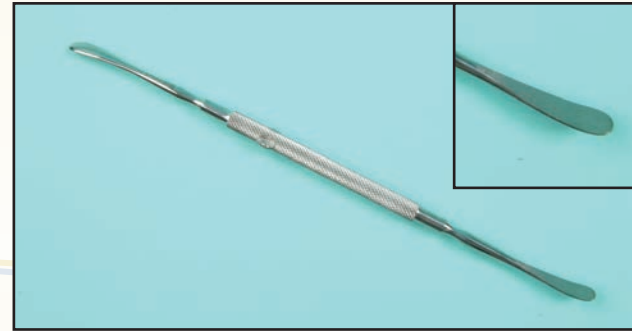
Used to elevate the gingiva and mucosa away from the diseased pocket after an incision has been made with a scalpel on one or both sides of the pocket.



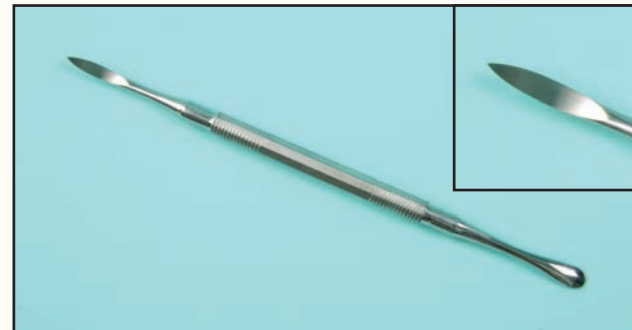
DTP10333 – Molt #2/4 Perio Elevator Double-end  
This is the periosteal elevator in the very popular Woodward Extraction Kit. One end is 2mm, and the other end is 4mm. This can be used in both dogs and cats. It is an excellent all purpose perio elevator used for doing gum flaps. Each end has a slight bend or curve to it.



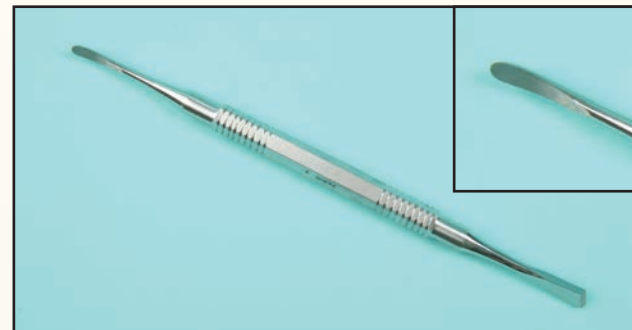
DTP453110 – Periosteotome Double Ended  
One of our most popular periosteal elevators. It has small, very delicate ends and is excellent for use in doing gum flaps in small dogs and cats. Both ends are completely straight.



DTP10337 – Freer #4 Small Perio Elevator



DTP10339 – Molt #9 Perio Elevator Double-end



DTP10335 – West #2 Perio Elevator Double-end

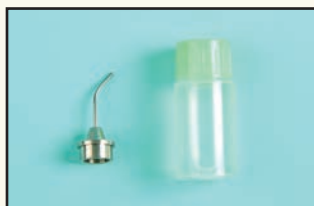
## SHARPENING STONES



DTP10615 – Arkansas Sharpening Stone, Conical



DTP10375 – Arkansas Sharpening Stone, Flat



DTP10660 – Universal lubricating oil .4 oz



DTP90605 – Acrylic Test Stick (3 pack)

Please also see our sharpening machine located on page 45.

## INSTRUMENT TRAYS



DTP10925  
Small Instrument Tray Divided Autoclavable 8" x 4"



DTP10925L  
Large Instrument Tray (Flat) Autoclavable 13 1/2" x 9 5/8"



DTP10925D  
Large Instrument Tray (Divided) Autoclavable 13 1/2" x 9 5/8"

A01-115 – Stainless Steel Tray 13 1/2 x 9 5/8 (not pictured)

## EXTRACTION FORCEPS

Small extraction forceps are excellent for grasping small teeth (especially in cats). All have spring action for easy manipulation.



DTP10645 – Small Extracting Forceps (4-1/2")  
Beak tips are flat and close completely. Perfect for small cats teeth.



DTP11305 – Tartar Remover Forceps - Small (4-1/2")  
DTP11307 – Tartar Remover Forceps - Large (5-1/2")  
Designed to remove heavy deposits of calculus from the teeth.



DTP10644 – Small Rongeur Forceps (4-1/2")  
DTP20644 – Medium Rongeur Forceps (5-1/2")  
Useful for gently grasping flat surfaces of large teeth (i.e. canine) for extraction.



DTP20645 – Large Extracting Forceps (6-1/2")  
Useful for large canine teeth, premolars and molars.



DTP20379 – Fragment Forceps - Angular (5")  
Indispensable for broken root fragments and some small delicate teeth, such as incisors of cats.



DTP13914 – (5-1/2") Extraction Forceps with right angle  
Excellent for small incisors and caudal teeth.

## SCISSORS

Useful in lengthening and trimming the gingival flap.



Gum & Tissue "S" Shape Serrated Scissors (4-1/2")  
DTP20954

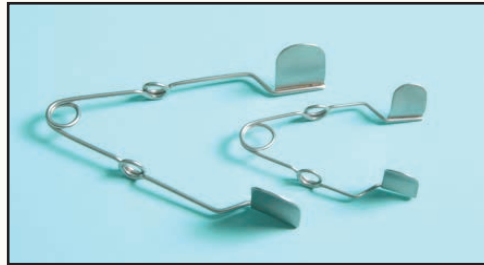


Serrated / Curved Dean Scissors (7")  
DTP30960

## RODENT DENTAL INSTRUMENTS



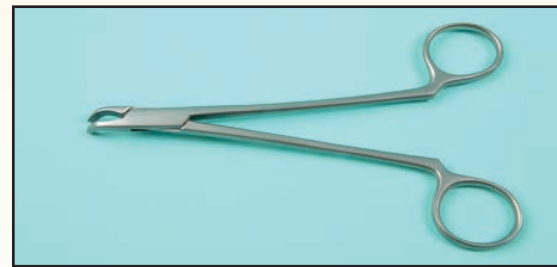
DTP454500 – Rodent Mouth Gag  
An essential tool when examining the mouth of a rabbit.



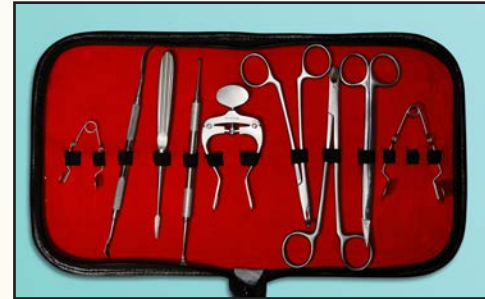
DTP454550 – Small Rodent Cheek Dilator  
DTP454555 – Large Rodent Cheek Dilator  
Allows visualization of molars and protects cheeks from instruments. Also useful as a gag for guinea pigs and chinchillas.



DTP454800 – Molar Rasp  
Used to remove tooth spurs without damaging the delicate root structure.



DTP454600 – Molar Extraction Forceps  
Designed to grip without crushing. Most abscesses around the rabbit head have their origin in molar tooth roots.



DTP454850 – Rodent Dental Kit (Set of 7 instruments)



DTP454650 – Rodent Molar Cutters  
Used to trim spurs and hook angles. Unique shape enables the surgeon to see what is being cut.

## RABBIT INCISOR LUXATOR

Malocclusion in rabbits is a serious problem. Extraction is the only permanent solution. The roots of the incisor in rabbits are large relative to the jaw. This luxator is designed to match the curvature of the roots of the incisor and is double ended for different size incisor.



DTP454700 – Rabbit Incisor Luxator



DTP02443 – Rodent Bur Guard - A soft tissue protector used on low speed handpieces.

## PROPHY PRODUCTS



DTP00730 – VETCARE  
Propy Paste Med.  
250 gr. Jar Fruit Flavor

DTP00729 – VETCARE  
Propy Paste Coarse  
Mint Flavor

DTP00735 – Propy  
Paste Finger Ring Cup  
Stainless Steel



**INDIVIDUAL PROPHY PASTE CUPS**  
Package of 100 Med.  
Fruit Flavor  
DTP00731



**FLUORIDE GEL CONCENTRATE**  
Orange Gel Concentrate  
Active ingredient: 1.23% fluoride ion.  
DTP10525 - 16 oz. bottle



**TRUE-SEAL**  
Propy Angle  
(Sealed & Autoclavable)  
DA10955 – Snap-on  
**ECONOMY**  
Propy Angle  
(Autoclavable)  
DA551PSN – Snap-on



**TRUE-SEAL**  
Propy Angle  
(Sealed & Autoclavable)  
DA10956 – Screw-on  
**ECONOMY**  
Propy Angle  
(Autoclavable)  
DA552PSC – Screw-on



**PROPHY CUPS**  
DTP00720 – Snap-on Propy Cup, box of 144  
DTP00670 – Screw-on Propy Cup, box of 144  
DTP00665 – Latch Type Propy Cup, box of 144



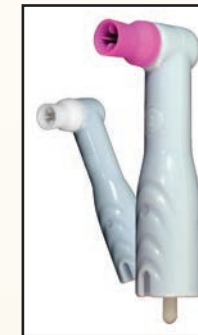
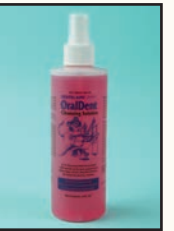
CLOSE UP



**FLUORIDE QUICK - GEL**  
(Stannous Fluoride .4%)  
Helps prevent cavities by strengthening the enamel. Also has an anti-bacterial effect. 4.3 oz. bottle  
DTP10522 - Cinnamon  
DTP10524 - Berry  
DTP10526 - Mint

**FLUORIDE FOAM**  
7.4 oz.  
Active ingredient: 1.23% fluoride ion.  
DTP10527

**ORALDENT CLEANSING SOLUTION**  
DA100CS  
0.1% Chlorhexidine solution - 8 oz.



**SPARKLE DISPOSABLE PROPHY ANGLE**  
DTP10966 – Bag of 100

**New 'TWISTER' DISPOSABLE PROPHY ANGLE**  
Propy Cup reciprocates back and forth. No paste splatter! No heat! No more tangles from catching hairs! Latex Free.



DTP10967 – Twister Propy Angle w/Cup Bag of 100  
DTP10967-50 Bag of 50  
DTP10965 – Standard Disposable Propy Angle w/Cup, Box of 100



**SPARKLE DISPOSABLE CONTRA PROPHY ANGLE**  
DTP10970 – Bag of 100



**DISCLOSING SOLUTION**  
Used to locate calculus or plaque on teeth. Good to spot check thoroughness of prophylaxis. Paint on with Q-tip or brush. Plaque disclosing Solution.  
DTP10695 - 2 oz.

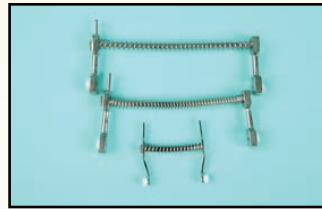


## MOUTH GAGS & RETRACTORS



DTP42251 – Dental Mouth Props (Assort. 3 sizes, bag of 50). Red, yellow & blue.

DTP42254 – Large Mouth Gag 7"  
DTP42250 – Canine Mouth Gag 5"  
DTP42256 – Feline Mouth Gag 3"



### ATRAUMATIC LIP RETRACTOR



DTP42258 – Atraumatic Lip Retractor  
Developed by a Veterinary Dentist,  
Gentle and Flexible.



### SENN RETRACTOR

DTP42260 Indispensable  
for gingiva retraction as  
well as cheek retraction.



### PLASTIC CHEEK RETRACTORS

Ideal for pulling back the lip corners of dogs for access to the caudal part of the mouth.  
DTP42257 – Small 1-1/2" wide • DTP32590 – Large 2" wide

## SAFETY PRODUCTS

### SAFETY GLASSES



DTP360005 - Clear



### SPLASH SHIELD

(Protection from paste splatter/bacteria)  
Comes with band  
DTP11234  
Pkg. of 3

### SECURE FIT PROCEDURAL MASKS WITH EAR LOOP - DTP11235



- QTY 50
- BFE = 99.9% @ 3 microns
- PFE = 99.7% @ 0.1 micron
- Fluid resistant outer layer
- Fluid resistant white inner layer
- Extra-long aluminum nose piece

### AUTOCLAVABLE BAGS



DTP11236 – pack of 1000  
• Self-Sealing Paper Bags  
• Color Process indicators – steam, EtO  
• 2.5" x 1.5" gusset x 10.5"

### HAND SANITIZER SYSTEM



DTP11237 – Sanitize Hand Sanitizer Promo Pack.  
Includes 2 dispensers and six 1,000 ml Gel Packs.  
• Convenient wall mounted one touch dispenser  
• Provides a pre-measured application to minimize waste  
• SaniTize Waterless Moisturizing Antimicrobial Gel  
- Kills MRSA  
- Kills up to 99.99% of bacteria in as little as 15 seconds  
- Contains 62% Ethyl Alcohol, meeting CDC recommended guidelines  
- Contains Aloe Vera, Vitamin E, Liposomes and Keratin to moisturize skin  
- Latex compatible - no lanolin or petroleum based emollients  
DTP11238 Sanitize 1,000 ml Gel Packs case of 8  
DTP11239 Sanitize dispenser

## RESTORATIVE DENTAL PRODUCTS

**ALGINATE SPATULA**  
DTP10213



**ALGINATE POWDER**  
DTP10125



**FLEXI-BOWL**  
DTP150110 – Green, 700ml

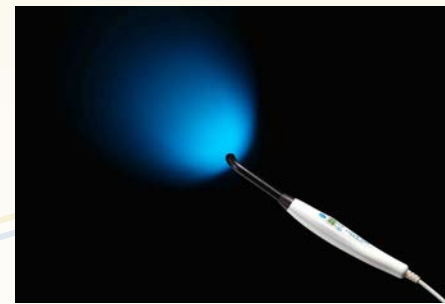


**IMPRESSION TRAY**  
DTP00966 – Set of 8



Meeting and Exceeding the Needs of Veterinary Dentistry since 1988  
www.DentalAireProducts.com • 800-866-6881

## RESTORATIVE DENTAL PRODUCTS



### Litex695 LED CURING LIGHT

- DTP00802
- Thin and lightweight dual intensity light polymerization LED curing light
  - Standard autoclavable 8.5 mm probe with 360° rotation for easy access
  - No more bulbs to replace with average LED life of 50,000 hours
  - Smooth and contoured ergonomic design offers added comfort and easy cleaning
  - Conveniently located thumb buttons set timer and intensity for two stage step-curing
  - Two-stage polymerization resulting in less shrinkage stress
  - Automatic timer with audible tone and digital display on handpiece
  - Light intensity of 1,200 mW/cm<sup>2</sup> cures composite in 10 seconds/4mm.
  - Curing cycle can be interrupted manually with one-touch trigger button.
  - Large Lithium battery capacity provides 750 ten-second curing cycles on a full charge
  - Low battery warning beeper
  - Built-in light intensity indicator
  - Eye protection shield included for safe operation



### Litex696 CORDLESS LED CURING LIGHT

- DTP00803
- Power Supply: 100V to 240V
  - Thin and lightweight dual intensity light polymerization LED Curing light
  - Standard autoclavable 8.5mm probe with 360° rotation for easy access
  - LED life ~ 50,000 hours
  - Two stage polymerization with initial lower intensity prior to higher intensity polymerization resulting in less shrinkage stress
  - Automatic timers with audible tone and digital display on handpiece
  - Light intensity of 1,200 m W/cm<sup>2</sup> cures composite in 10 seconds/4mm
  - Curing cycle can be interrupted manually with one touch trigger button
  - Large lithium battery capacity provides 750 ten second curing cycles on a full charge
  - Eye protection shield included for safe operation



### CLEAR BLUE CURING LIGHT

DTP00683  
This light is very portable, never heats up (LED), is quiet and very easy to read. No bulbs are needed.

#### ONE YEAR WARRANTY

**Technical Specifications:**  
Power supply: 100V to 240V  
Weight: 80gm  
Light Source: Super Blue LED  
Spectrum Range: 450-490nm  
Light Guide: 8mm angled optical fibers  
Standard Accessories:  
• 1 light guide (8mm), 1 handpiece and 1 handpiece holder  
• 1 oval protector, 2 mini-protectors

## TWINZ™ VPS VINYL POLYSILOXANE IMPRESSION MATERIAL SYSTEM

Unsurpassed level of detail and accuracy for perfect fitting restorations:

- Thixotropic to avoid dripping or slumping
- Exceptionally hydrophilic for accurate, void-free impressions and pours
- Excellent tear strength at mouth removal and for multiple pours
- High dimensional stability, no rush to pour models
- No taste or odor to trigger a salivary response

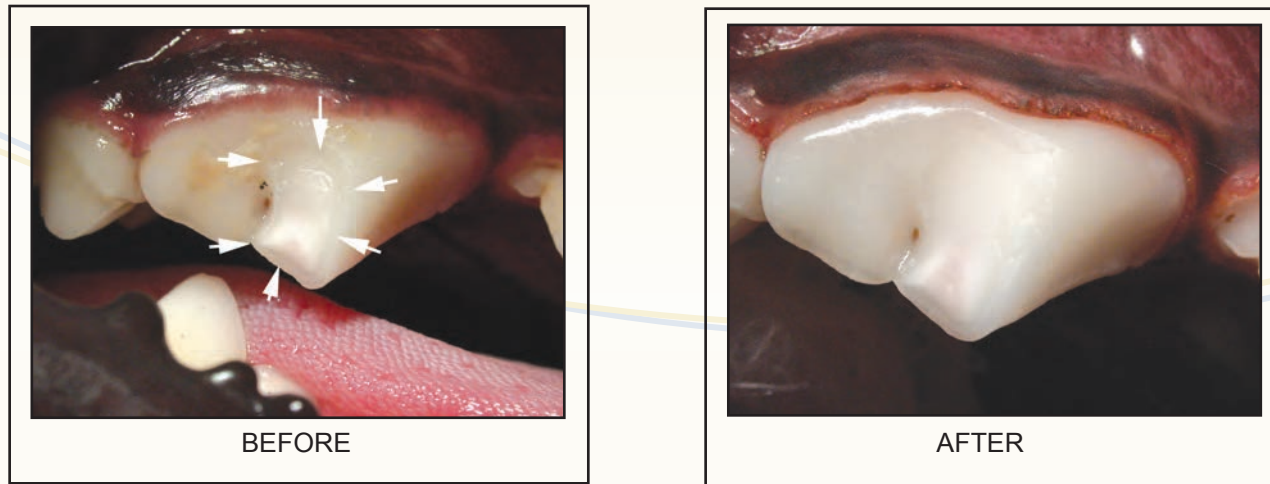
Manufactured and packaged by BISCO, a history of quality.

- DTP40030 – TWINZ VPS (Vinyl Polysiloxane Impression Material) 50cc.  
Heavy Body, Fast Track, Color - Aqua. 40 second oral work time.  
DTP40050 – TWINZ VPS (Vinyl Polysiloxane Impression Material) 50cc.  
Light Body, Fast Track, Color - Green. 40 second oral work time.  
DTP41100 – TWINZ VPS (Vinyl Polysiloxane Impression Material) 2 x 350gm jars.  
Heavy Body, Putty, Color - Blue. 1.5 minute room temp. work time.  
DTP41040 – TWINZ VPS (Bite Registration Material) 50cc.  
Heavy Body, Color - Brown. 30 second oral work time.  
DTP21010 – TWINZ VPS, Auto-Mix Bisco Dispenser.  
To be used with DTP40030, DTP40050, DTP41040



**DENTALAIRE**

## RESTORATIVE DENTAL PRODUCTS



Repairing fractured teeth has never been easier. To properly use this kit, you'll need a Curing Light (page 16)

### BONDED SEALANT KIT - DTP99950

This kit has all you will need to start applying bonded sealants for exposed vital dentin and bonding composite restorations. The kit comes complete including instructions. It contains the following items: (treats 30-44 teeth)

Does not contain curing light.

1. **Etch 37% Phosphoric Acid** (5gm syringe), is used to etch dentin and enamel prior to restorative materials.
2. **One Step**, which is a universal light cure dental adhesive.
3. **Fortify**, is a "unified resin" used for coating areas of sealed dentin and composite restorations.
4. **Super Snap Mini Kit**, is designed for easy, fast, and safe contouring, finishing and polishing of fractured teeth and composites.
5. **Disposable Mixing Wells** (48), these are ideal for handling and applying dental materials dispensed in small quantities.
6. **Applicators, Disposable** (Light Blue - 100), ideal for precise application of dental materials.
7. **Dura-White Stones** (2), for use in high speed handpiece.
8. **Contra Angle**

DTP99950 Kit contains:

- DTP5503E - Etch 37%
- DTP1102P - One Step
- DTP9031F - Fortify
- DTP22491 - Super Snap Mini Kit
- DTP80496 - Disposable Mixing Wells
- DTP80241 - Disposal Applicators (Orange-100)
- DTP0450 - Dura-White Stones
- DA553UL - Latch Type Contra Angle



### An insight on using bonded sealants...

Smoothing a fracture site and applying bonded resin sealants serves several purposes. Smoothing the fracture site decreases plaque adherence and calculus accumulation, and decreases soft tissue irritation from the fractured surface. Plugging the dentin tubules with the bonded sealants decreases sensitivity and helps prevent infection of the pulp chamber. After the application of bonded sealants, the tooth is able to provide a permanent "patch" on the inside through the deposition of reparative dentin. Typically, this procedure is only done once per fracture site.

## RESTORATIVE DENTAL PRODUCTS



### SUPER-SNAP® POLISHING SYSTEM DTP24490

Designed for easy, fast and safe contouring, finishing and polishing of all micro filled and hybrid composites. The ultra-thin disks are very flexible, bending under pressure without breaking and allowing easier access to interproximal areas. You will find the complete range of disks in the Super-Snap Rainbow Technique Kit. The kit contains 180 disks (100 standard – 80 mini), 40 polystrips, 2 Dura-White Stones (shapes CN1 and FL2), 1 Composite Fine, Mid-Point and 4 CA mandrels – all presented in a semicircular rainbow organizer tray.

### SUPER SNAP MINI KIT DTP24491



This kit is designed for easy, fast and safe contouring, finishing and polishing of fractured teeth and composites.

### COMPOSITE FINISHING KIT DTP10510



Kit includes two Dura-Green and two Dura-White CN1 and FL2 stones, 6 Composite Fine Points.

# DENTALAIRE

Meeting and Exceeding the Needs of Veterinary Dentistry since 1988  
www.DentalaireProducts.com  
800.866.6881

## You Must See it to Treat it.

Make Seeing it to Treat it easy with DentaLaire DTX Digital Dental X-Ray System

Best Sensor  
Best Software  
Best Support

**Case One**  
Sadie: Damaged root and bone surrounding distal root. Radiograph can also be used as extraction guide.

**Case Two**  
Ellie: Large area of bone loss around both roots of dead tooth that "appeared" normal. Owner's claimed Ellie acted like a new animal post recovery.

See it to Treat it .....

See page 38

## RESTORATIVE PRODUCTS

### ALL-BOND 2 (6ml x 2)



This is a universal dental adhesive, which is still unsurpassed in its ability to bond to dentin, enamel, new or old composites and amalgams. It has a dual-cured primer, which means it can be used with or without a light cure unit. It also comes with an antimicrobial etchant that etches and disinfects at the same time.

DTP42500 – ALL BOND 2 w/Etch, DE Resin, Prebond Kit  
DTP2510A – ALL BOND 2 (Refill) 6 ml. x 2

### ALL-BOND 3 (6ml x 2)



DTP2510A - ALL-BOND 3

is a dual-cured, 3-step universal dental adhesive system that is compatible with all dental materials. It utilizes improved ALL-BOND 2® technology making ALL-BOND 3 relatively more hydrophobic to enhance the durability of the bond. The ethanol-based formula requires less number of coats and is more user-friendly than ALL-BOND 2. ALL-BOND 3 RESIN is a hydrophobic radiopaque filled bonding resin. Its radiopacity outlines the restoration and reduces the risk of misdiagnosing caries. ALL-BOND 3 RESIN is

HEMA-Free, which makes the bonding layer less prone to water sorption. Water sorption can be a critical cause in degradation of the bond, and may promote further decay.

- Easier and faster to use
- More hydrophobic for longer lasting bonds
- Consistent and predictable results

### ALL-ETCH



All-Etch 10% (Phosphoric Acid) 5gm. syringe. This is a semi-gel that can be used on dentin and enamel at the same time to produce micro-retentive surface characteristics for successful bonding.

DTP5501E – All Etch 10% 5gm. Syringe  
DTP5363E – All Etch 10% 70gm.

### ONE-STEP (6ml)



This is a universal light cure dental adhesive, which bonds to a wide variety of dental substrates. Very useful in sealing exposed dentin tubules in fractured teeth.

DTP1102P

### ONE-STEP PLUS (6ml)

This is a "filled version" of the clinically proven One Step. It is designed to bond to composite dentin, enamel, cast materials, treated porcelain and set amalgam. A very strong bonding agent for composite restoratives.

DTP2001P



### FORTIFY (5ml)

Composite Surface Sealant Refill

DTP9031F– Fortify

This is an "unfilled resin" used for sealing of composite restorations. It fills in microscopic defects and improves the longevity of composite restorations. It also helps to prevent micro leakage. This product is also very useful for sealing exposed dentin in fractures, when used in combination with One Step (light cure) or All Bond (self cure) dental adhesives.



### ETCH 37% - DTP5503E

(Phosphoric Acid) 5gm. Syringes used to etch dentin and enamel prior to placing restorative materials. (most popular)

### ETCH 37% - DTP5638E

(Phosphoric Acid) 70gm. Same as above.

### BLUE TIPS FOR ACID ETCH

DTP5503F (bags of 30)



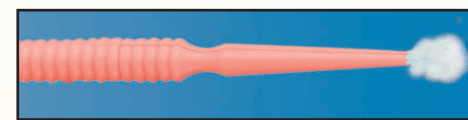
## RESTORATIVE DENTAL PRODUCTS

### BRUSH TIPS / BRUSH HANDLES



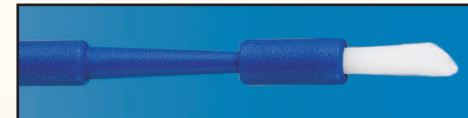
DTP80223 – Brush Tips, pack of 1000. Ideal for applying adhesives, activators, sealants and other liquids.  
DTP80211 – Brush Handle is ideal for reaching any tooth surface and holds the above brush tips.

### APPLICATORS (100 per pack)



DTP80241

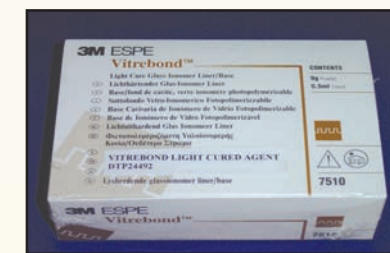
DTP80241 – Applicator (disposable). Regular / Orange For applying adhesives in large areas.



DTP80247

DTP80247 – Brush Applicator. Dark Blue. These Endo Brushes are used when applying adhesives to a prepared canal, prior to cementation of a post.

### VITREBOND GLASS IONOMER LINER / BASE



DTP24492

Vitrebond is a dual-cure (both light and self-cure) glass ionomer useful as base/liner, in endodontic restorations, and in the restoration of caries at the gingival margin. Fluoride release aids in preventing the extension of carious lesions.

### VISIBLE LIGHT CURE CALCIUM HYDROXIDE LINER - DTP10575



Used as a liner in cases of near pulp exposure, vital pulp therapy after placement of calcium hydroxide power on the exposed pulp tissues. Light cure polymerization is very convenient and shortens clinical procedure times.

### MIXING WELLS



Disposable, packs of 48  
DTP80496 – These are ideal for adhesives, opaquers and all materials dispensed in small quantities.

### MIXING PADS



2-3/8" x 2-3/8", 5 pads per pack  
DTP80485 – Great to use with Vitrebond.

### GLASSIONOMER CEMENT

A self cure ionomer cement, useful as a base/liner and in the restoration of caries at the gingival margin.  
DTP10140

### CEMENT SPATULA



DTP10212

### AELITEFLO COMPOSITE (LIGHT CURE / FLOWABLE)



This is easily injected into restoration sites. Benefits include radiopacity for easy identification, easily polished, very stain resistant, excellent wear resistance and strength. Used mainly for filling defects in non-occlusal areas.

DTP671A2 – Shade A-2, refill 1.5gm. Syringe Light Cure / Flowable  
DTP671A3 – Shade A-3, refill 1.5gm. Syringe Light Cure / Flowable  
DTP673C2 – Shade C-2, refill 1.5gm. Syringe Light Cure / Flowable  
DTP674D3 – Shade D-3, refill 1.5gm. Syringe Light Cure / Flowable  
AELITEFLO Intro Kit: 1.5g Syringes: A1, A2, A3.5, C2, and D3, disposable syringe tips, instructions / MSDS

## RESTORATIVE DENTAL PRODUCTS

### BIS-CORE Kit DTP1730B



2 syringe package, opaque. 1- Syringe dual cured catalyst 5gm.  
1 syringe light cured base 5gm. Includes instructions and MSDS.

This core build up material is a "highly filled" composite available in two shades, (natural and opaque). It has a unique combination of viscosities allowing flexibility of use.



The base is light cured, the catalyst is a low viscosity self cured composite. It can be light cured to prevent slumping, while self cure finalizes the set.

DTP1731B – BIS-CORE REFILL  
1 Syringe opaque catalyst 5gm.

DTP1732B – BIS-CORE REFILL  
1 Syringe base 5gm.

DTP1734B – BIS-CORE REFILL  
1 bottle liquid Catalyst 1.5gm.



**PRO-TEMP III  
GARANT KIT**  
Includes dispensers and cartridge with tips  
DTP46201

**PRO-TEMP III  
Replacement  
Cartridge with tips  
(21)**  
DTP46246

This is a composite which is used to construct stabilizing occlusal splints for noninvasive mandibular fracture reduction. There are many uses such as: avulsion and luxation; symphyseal fracture reduction; turtle shell repair; bird beak fractures; bird beak alignment or occlusion correction. Also, to correct Base Narrow Lower Canines in dogs. Stronger, faster, easier to use than acrylics. Sets in 90 seconds.

### BISFIL II KIT COMPOSITE DTP1210P



Self Cured Posterior Hybrid  
Standard package - 1 Jar Base 7gm.  
1 Jar Catalyst 7gm.  
Accessories / Instructions / MSDS  
Available in Universal Shade

This is a self curing composite restorative 3 material that allows for restorative procedures without a light cure unit.

### AELITE (LIGHT CURE / MICRO HYBRID) COMPOSITE



This is a very durable universal composite, which is ideal for all applications. Excellent for use in ALL CLASS of restorations. It offers you superior handling and resists slumping, which gives you greater control. It can be used as a core build up material or all alone by itself. This composite is polishable to an enamel like finish, while offering a high resistance to wear and stain. It can be used in high force areas of occlusion.

DTP814A2 - Aelite All Purpose Body - Composite (Shade A - 2)  
DTP814A3 - Aelite All Purpose Body - Composite (Shade A - 3)  
DTP814C2 - Aelite All Purpose Body - Composite (Shade C - 2)  
DTP814D3 - Aelite All Purpose Body - Composite (Shade D - 3)

All 4 of these products come in a (.25 gm. syringe)

### WOODSON PFI #3



DTP00210 – Plastic Filling Instrument

### FLOUR PUMICE



DTP10860 – 8 oz.  
Fine Grit

## ENDODONTICS

### ENDODONTIC ORGANIZERS



Millimeter marked  
ml. 029  
**Gutta Percha**  
DTP103301  
240 pts. #15/80

Millimeter marked  
as MMPP  
**Paper Points**  
DTP301203  
240 pts. #15/80

**BARBED BROACHES** – (21mm)  
Pack of 10- color coded. Used to remove  
root canal contents. DTP711330



**K-REAMERS**  
Set of 3 Assorted (60mm)  
DTP01777 – #15-20-25  
DTP01778 – #30-35-40  
DTP01779 – #45-50-55  
DTP01780 – #60-70-80



**H-FILES**  
Set of 3 Assorted (60mm)  
DTP01747 – #15-20-25  
DTP01748 – #30-35-40  
DTP01749 – #45-50-55  
DTP01750 – #60-70-80



**H-FILES**  
Set of 3 Assorted (120mm)  
DTP01761 – #20-25-30  
DTP01762 – #35-40-45  
DTP01763 – #60-70-80



**FINGER PLUGGERS**  
Set of 6 Assorted – (25mm)  
DTP190662

- Used to vertically condense gutta percha in root canal procedures.
  - 25 mm long, sizes #15-40.
- Color coded.**



**FINGER SPREADERS**  
Set of 6 Assorted – (25mm)  
DTP190676

- Used for laterally spreading gutta percha in root canal procedures.
  - 25 mm long, sizes #15-40.
- Color coded.**



DTP10230 – Zinc Oxide, 1.5 oz.  
(Powder)



DTP10153 – Eugenol (Liquid)

### WOODWARD PLUGGERS



DTP00016 – Woodward Plugger A  
.03mm  
DTP00017 – Woodward Plugger B  
.04mm  
DTP00018 – Woodward Plugger C  
.05mm  
DTP00019 – Woodward Plugger D  
.06mm

DTP00020 – Woodward Plugger Kit - Includes all of the above  
These endodontic/composite pluggers are designed for multiple applications, including compaction of gutta percha, removal of gutta percha (when heated), placement of composite restoratives, placement of medicaments when performing vital pulp therapy (pulp caps) and placement of apical endodontic restorations. The four sizes, each with two unique bends, will cover most of your plugger needs.

### HOLMSTROM PLUGGER/SPREADERS



- Special veterinary pluggers and spreaders designed by a veterinary dentist (Dr. Steve Holmstrom).
  - 35mm long, sizes #50, 65 & 90
  - 28mm long, sizes #20, 35
  - Especially useful for obstructions in larger canine teeth.
  - Available individually or in a set.
- DTP453120 – Holmstrom Plugger/Spreader #20  
DTP453135 – Holmstrom Plugger/Spreader #35  
DTP453150 – Holmstrom Plugger/Spreader #50  
DTP453165 – Holmstrom Plugger/Spreader #65  
DTP453190 – Holmstrom Plugger/Spreader #90  
DTP453191 – Holmstrom Plugger/Spreader (Set of 5)

### ENDO LOCKING PLIERS – DTP10570

Useful for handling paper point and gutta percha points



### GUTTA PERCHA POINTS (not shown)

60mm Gutta Percha (60)  
DTP122203 – #15  
DTP122204 – #20  
DTP122205 – #25  
DTP122206 – #30  
DTP122207 – #35  
DTP122208 – #40  
DTP122209 – #45  
DTP122210 – #50  
DTP122211 – #55  
DTP122212 – #60  
DTP122213 – #70  
DTP122214 – #80  
DTP122215 – #90  
DTP122216 – #100  
DTP122217 – #110  
DTP122218 – #120  
DTP122219 – #130  
DTP122220 – #140

### ABSORBENT PAPER POINTS (not shown)

60mm Paper Points (60)  
DTP218291 – #15-20-25  
DTP218292 – #30-35-40  
DTP218293 – #45-50-55  
DTP218294 – #60-70-80  
DTP218295 – #90  
DTP218296 – #100  
DTP218297 – #110  
DTP218298 – #120  
DTP218299 – #130  
DTP218300 – #140

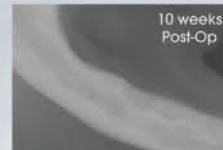


Get real bone regeneration with real bone allograft!

*It's what human dentists use!*

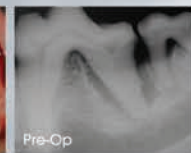
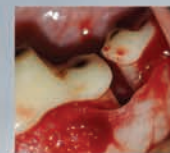
## Osteoallograft® Periomix®

Fill Extraction Sites:



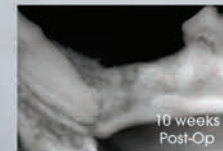
- ✓ Infection and further bone loss avoided
- ✓ Risk of fracture minimized

Save Teeth:



- ✓ Tooth saved from extraction
- ✓ Infection and further bone loss avoided

Fix Fractures:



- ✓ Fracture fixed
- ✓ Bone stock regained



Osteoallograft

## Comparison with Bioglass

Short-term comparison at 6 weeks:

Periomix:

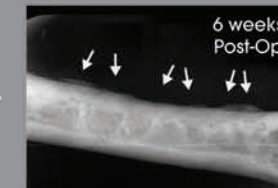
(left mandible)



- ✓ Extraction sites barely visible
- ✓ Well integrated into host bone

Bioglass:

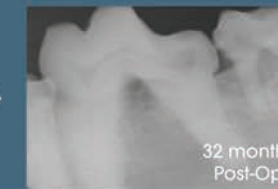
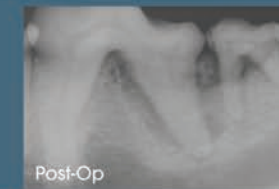
(right mandible of the same patient)



- ✗ Extraction sites remain visible
- ✗ Marginal integration into host bone

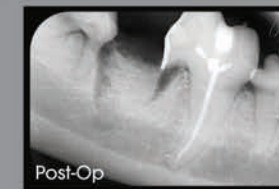
Long-term comparison at 32 months:

Periomix:



- ✓ Alveolar margin fully maintained long-term
- ✓ Complete integration into host bone

Bioglass:



- ✗ Almost half of the material is lost
- ✗ Extraction site still visible at 32 months!

Osteoallograft® Periomix® is real bone allograft from Veterinary Transplant Services, Inc., the world's first animal tissue bank. It consists of osteoconductive cancellous bone chips that provide a scaffold for new bone to grow on and osteoinductive Demineralized Bone Matrix (DBM) that provides growth factors to stimulate bone growth and healing. It is largely due to this osteoinductivity, together with the bone-to-bone (rather than bone-to-glass) fusion, that natural bone allograft outperforms bioglass in bone regeneration and healing.

Easy to Use:



Rehydrate with saline or patient blood.



Pack into extraction site, around roots, or other bone loss site.



Suture close surgical flap.

Manufactured by



VETERINARY TRANSPLANT SERVICES, INC.

www.vtsonline.com • info@vtsonline.com

# Osteoallograft® Periomix®

## Now Brought to You by DentaLaire.

Freeze-dried Periomix packaging: sterile-packaged in a screw-top vial

5 year shelf life



**DTP10685**  
First Time Users Only!  
Osteoallograft Periomix Starter Kit Includes (1) 0.3, (2) 0.5, instructional case study DVD.  
**Save over \$70.00!**

Osteoallograft™ Periomix® is real bone allograft. The Cancellous Chips provide a biologic scaffold and the Demineralized Bone Matrix (DBM) provides growth factors. These stimulate natural bone growth and healing.



DBM with cancellous chips <0.7mm

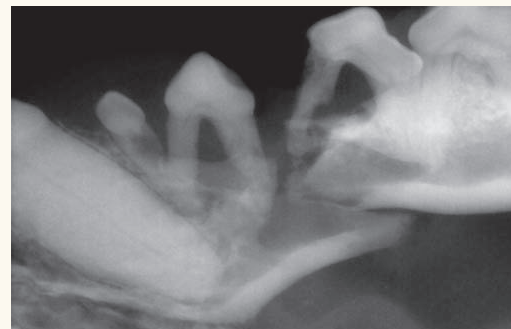
Indications:  
Prevent tooth loss  
Fill extraction sites  
Fill furcation defects  
Rebuild alveolar margin  
Fix mandibular fractures  
Fill any bone loss site

DTP10675 - CANINE PERIOMIX 0.3CC OGRAFT  
DTP10676 - CANINE PERIOMIX 0.5CC GRAFT  
DTP10677 - CANINE PERIOMIX 2 CC GRAFT  
DTP10678 - CANINE PERIOMIX 3.0CC GRAFT  
DTP10679 - FELINE PERIOMIX .2CC

Osteoallograft Periomix is vital to many clinical uses.



Bilateral mandibular fractures left the entire rostral right and left mandibles mobile.

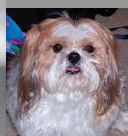


#### PRE OP:

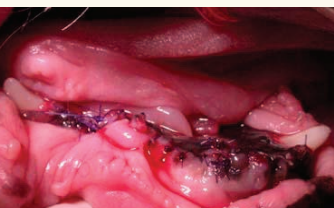
Although the fractures had occurred after the patient had been bitten by another dog, it was apparent from pre-op radiographs that severe periodontal disease played a significant role in these fractures.

#### 12 WEEK FOLLOW UP:

Both fracture sites were well-healed and had filled in with normal bone. No mobility was present. Said Dr. Woodward, "To say I am amazed would be putting it lightly."



Mickey  
12 y/o  
Lhasa Apso



Mobile teeth were extracted, Osteoallograft® Periomix® was placed, and soft tissues were closed. Supporting sutures helped raise the front of the mandible. No implants were used.



Images courtesy of Tony M. Woodward, DVM, DAVDC

# Ossiflex™ Bone Membrane

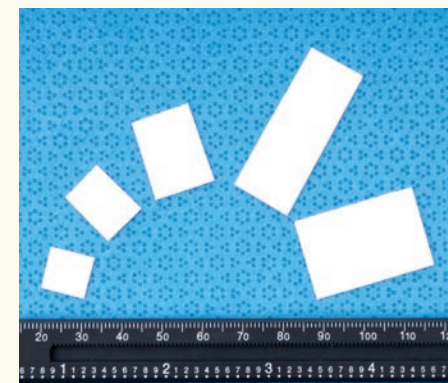
## The membrane you have been looking for.

Ossiflex™ Bone Membranes are thin, flexible sheets made of natural, demineralized cortical bone. Ideal for Guided Tissue Regeneration, oronasal fistulas and more, they are the membranes you have been looking for:

- Avoids premature soft tissue in-growth into areas of bone healing
- No removal necessary
- Can be sutured through to keep them in place
- Can be cut and curved to fit
- Proven technology

#### Use Ossiflex Bone Membranes for:

- **Guided Tissue Regeneration**  
Placing a membrane between bone graft and soft tissue avoids premature soft tissue in-growth.
- **Oronasal Fistulas**  
While thin and flexible, Ossiflex Bone Membranes are strong enough to keep food particles from traveling through oronasal defects.
- **Cleft Palates and Cranio-Facial Defects**  
Ossiflex Bone Membranes are also ideal for treating cranio-maxillo-facial defects. For example, they can be used to support mucoperiosteal advancement flaps for closure of palatal defects.
- **Fracture Bridging and Mandibular Canal Protection**  
Ossiflex Bone Membranes can also be wrapped around mandibular fractures to support healing and be placed over open mandibular canals to keep growing tissue from impinging the nerve.



DTP10680 - OSSIFLEX BONE MEMBRANE SIZE 1  
DTP10681 - OSSIFLEX BONE MEMBRANE SIZE 2  
DTP10682 - OSSIFLEX BONE MEMBRANE SIZE 3  
DTP10683 - OSSIFLEX BONE MEMBRANE SIZE 3L  
DTP10684 - OSSIFLEX BONE MEMBRANE SIZE 4



## Call for case studies & Literature List!



Ossiflex used for Guided Tissue Regeneration (left) and for a large cyst that had been destroying the facial bones around the nasal cavities (right).



Compare for yourself:	Doxirobe Gel	Gore-Tex	Ossiflex Bone Membrane
Easy To Use		✓	✓
No Removal Necessary	✓		✓
Made of Natural Bone			✓

## MULTI TIER STAND

- **Durable Powder Coated Metal Post**
- **Durable Powder Coated Metal Trays**
  - 360° smooth rotation, multi directional trays.
  - Ergonomic rounded corners.
  - 34 x 25 cm. tray size ideal for instruments and small devices.
  - Detachable trays and arms designed for easy cleaning.
- **Rollers for Portability**
  - Responsive and impact resistant rollers with locking mechanism.

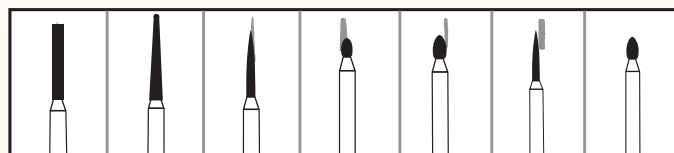


DTP000804

- **Specially Designed Clamp Brackets**
  - Height can be adjusted according to individual need and application.
- **Multi-function Rotary Arm**
  - Can accommodate a monitor, bleaching unit, etc.
  - Arms can be extended for more convenient use.
- **3 Sets of Built-in Universal Electric Outlets**

**Specially Designed Stand Created with the User in Mind!**

## FRICITION GRIP DIAMOND BURS



From Left to Right

- DTP1610M – Neodiamond Burs, Round End (Medium)
- DTP1610C – Neodiamond Burs, Round End Taper (Coarse)
- DTP1610F – Neodiamond Burs, Round End Taper (Fine)
- DTP5128C – Neodiamond Burs, Flame (Coarse)
- DTP5128M – Neodiamond Burs, Flame (Medium)
- DTP5128F – Neodiamond Burs, Flame (Fine)
- DTP1908C – Neodiamond Burs, Egg (Coarse)
- DTP1908F – Neodiamond Burs, Egg (Fine)
- DTP1923M – Neodiamond Burs, Football (Medium)
- DTP128VF – Neodiamond Burs, Flame (Very Fine)
- DTP390VF – Neodiamond Burs, Egg (Very Fine)
- All Neodiamond Burs (5 per pack)

Diamond burs have a variety of uses, including crown preparation, shaping composite restorations, preparing sites for restorative materials, and smoothing bone in surgical sites prior to closure. One advantage is that they do not tend to catch and tear the soft tissues as do most other burs. The flat end cylinder burs are particularly useful for smoothing bone. A selection of grits allows for progressive refinement of the area you are working on. Diamond burs tend to have a much longer useful life than carbide burs. This selection represents the most popular shapes in veterinary dentistry. Total length never exceeds 22mm.

## ADDITIONAL BURS

### RA (Latch Type) BUR (5 per pack)

- |   |               |
|---|---------------|
| DTP10036 – #700   | Handpiece Bur |
| DTP10038 – #701   | Handpiece Bur |
| DTP10042 – #702   | Handpiece Bur |
| DTP10059 – #1/2   | Handpiece Bur |
| DTP10060 – #2   | Handpiece Bur |
| DTP10064 – #4   | Handpiece Bur |
| DTP10066 – #6   | Handpiece Bur |
| DTP10068 – #8   | Handpiece Bur |
| DTP10040 – #33-1/2  | Handpiece Bur |
| DTP10067 – #35  | Handpiece Bur |
| Dentalaire Starter Bur Pack with 10 assorted RA (Latch type) Burs |               |
| DTP20201 – Pk. of 10  |               |

### HANDPIECE BURS (5 per pack) (For Low Speed, 40mm)

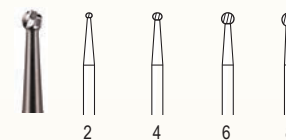
- |                  |               |
|------------------|---------------|
| DTP10070 #700    | Handpiece Bur |
| DTP10071 #701    | Handpiece Bur |
| DTP10072 #702    | Handpiece Bur |
| DTP10073 #1/2    | Handpiece Bur |
| DTP10074 #2      | Handpiece Bur |
| DTP10075 #4      | Handpiece Bur |
| DTP10076 #6      | Handpiece Bur |
| DTP10077 #8      | Handpiece Bur |
| DTP10078 #33-1/2 | Handpiece Bur |
| DTP10079 #35     | Handpiece Bur |

## FRICITION GRIP BURS/SURGICAL LENGTH BURS

Many types of burs are available. The cross-cut fissure bur (699, 700, 701, 701L, 702) is a good all-purpose bur that can be used to section teeth and gain endodontic access. It is also useful as a general purpose bur. The round bur (1/2, 1, 2, 3, 4, 6, 8) is used to gain endodontic access, to prepare cavities and to mark the cutting depth in crown preparation. The inverted-cone bur (33-1/2, 34, 35, 37) is used for undercutting cavity preparation to create a mechanical interlock. The pear-shaped bur (330, 331, 332) is used for root canal access and for undercutting dentin.

### ALL BURS COME IN PACKS OF 5

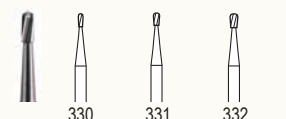
#### ROUND



#### FRICITION GRIP BURS (16mm)

- DTP10046 – Round Bur #1/2
- DTP10047 – Round Bur #1
- DTP10048 – Round Bur #2
- DTP10050 – Round Bur #3
- DTP10052 – Round Bur #4
- DTP10054 – Round Bur #6
- DTP10056 – Round Bur #8
- DTP10201 – 10 Assorted Burs with Bur Block, includes #6, #8, #330, #557, #558, #699, #700, #701, #702, #332

#### PEAR



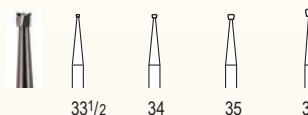
- DTP10017 – Pear Shape #330
- DTP10018 – Pear Shape #331
- DTP10020 – Pear Shape #332

#### STRAIGHT FISSURE CROSSCUT



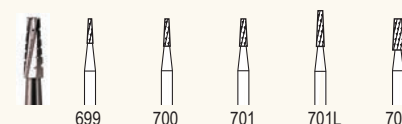
- DTP10021 – Cross-Cut Fissure #557
- DTP10019 – Cross-Cut Fissure #558

#### INVERTED CONE



- DTP10033 – Cone Shape #33-1/2
- DTP10034 – Cone Shape #34
- DTP10035 – Cone Shape #35
- DTP10037 – Cone Shape #37

#### TAPERED FISSURE CROSSCUT



- DTP10025 – Cross-Cut #699
- DTP10026 – Cross-Cut #700
- DTP10028 – Cross-Cut #701
- DTP10030 – Cross-Cut #701L
- DTP10032 – Cross-Cut #702

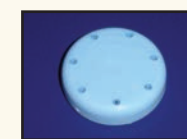
### SURGICAL LENGTH BURS (25mm)

- (Useful in big dogs with big teeth)
- DTPFGSL2 – Surgical Length FG. #2
  - DTPFGSL4 – Surgical Length FG. #4
  - DTPFGSL557 – Surgical Length FG. #557
  - DTPFGSL558 – Surgical Length FG. #558
  - DTPFGSL6 – Surgical Length FG. #6
  - DTPFGSL701 – Surgical Length FG. #701
  - DTPFGSL702 – Surgical Length FG. #702
  - DTPFGSL8 – Surgical Length FG. #8

### MAGNETIC BUR BLOCK ROUND



With cover - Holds 28 burs  
DTP10204



With cover - Holds 7 burs  
DTP10205

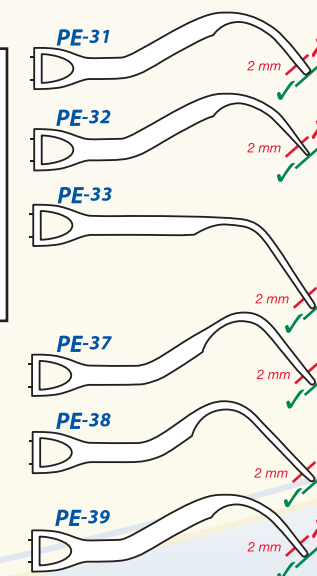
## REPLACEMENT TIPS

### FOR ULTRASONIC, MEGASONIC, AND ALL AIR SCALERS

- DTP00245 – Satelec #1S (Universal)
- DTP00246 – Satelec #2 (Voluminous)
- DTP00247 – Satelec #10P (Shallow Pocket Tip)
- DTP00248 – Satelec #3 (Voluminous, Stains)
- DTP10880 – Cavitron Insert 25K (Fine)
- DTP10881 – Cavitron Insert 30K (Fine)
- DTP10879 – Cavitron Insert 25K (Wide)
- DTP100UN – Megasonic Tip (Universal)
- DTP100FL – Megasonic Tip (Flat)
- DTP100PR – Megasonic Tip (Perio)
- DTP100CT – Catheter Tip f/Megasonic
- DTP100TW – Tip Wrench f/Megasonic
- DTP10876 – Star Titan Universal Tip
- DTP10877 – Star Titan Perio Tip
- DTP10878 – Star Titan Rebuild Kit
- DTP10882 – Sonix, Lynx, Airstream (Universal)
- DTP10883 – Sonix, Lynx, Airstream (Perio)
- DTP10884 – Sonix, Lynx, Airstream (Sickle)
- DTP10870 – Tip for Air Scaler (Sickle)
- DTP10875 – Tip for Air Scaler (Universal)
- DTP00576 – Replacement Spindle for Air Scaler
- DTP10872 – Tip for Air Scaler (Perio)
- DTP10885 – Sonus V Stack with Nosecone
- DTP10888 – Universal Tip to Sonus V Stack
- DTP10887 – Flat Tip to Sonus V Stack
- DTP00784 – Amdent Universal Tip #39
- DTP00785 – Amdent Flat Tip #32
- DTP00786 – Amdent Special / Perio Tip #33
- DTP00788 – Amdent Endo File Holder Tip 90°
- DTP00791 – Amdent Interproximal #37
- DTP00793 – Amdent Cath Tip
- DTP00794 – Amdent Scaling tip #31 (Removal Gross Calculus)
- DTP00796 – Amdent Scaling tip #PE-41PS (Super Slim, Perio)

### Check Your Piezo Tips!

Simply hold your tip up to the corresponding illustration – if yours is worn down more than 2mm it is time to replace it!



**Did you know that every mm of tip wear reduces efficiency by 25%?**

For Cavitron Insert replacements, see page 37

# DENTALAIRE

- Q. How much horsepower do I need to run a Dentalaire unit?**  
 A. 1/2 horsepower per dental station, which will run the high speed handpieces and low speed handpieces for hours of non-stop dental procedures.
- Q. Do the dental stations come with high speed and low speed handpieces?**  
 A. Yes, they do. We also include start-up supplies for polishing, a starter bur pack, and handpiece lubricant with all of our dental stations.
- Q. Can Dentalaire customize a dental station to my certain needs or specifications?**  
 A. Yes, we can. For example, we can add suction, a one horsepower motor, fiberoptics in the highspeed handpiece, ultrasonic scaling units, or almost anything else you desire. Since we are the manufacturer, we are happy to customize your unit to your desired individual specifications.
- Q. What are the advantages of the Dentalaire compressor?**  
 A. Dentalaire compressors are extremely quiet, odorless and are legendary for their workhorse construction.
- Q. What is the warranty on the Dentalaire dental station?**  
 A. They come with a one or two year warranty depending on model. The only exception is the piezo ultrasonic scaler which comes with a two year warranty.
- Q. Is Air Scaling the same as Piezo Ultrasonic Scaling?**  
 A. No, it is not. Air Scaling is “sonic” scaling rather than “ultrasonic”, operating at approximately 6,000 cycles per second. Ultrasonic (piezo and cavitron type units) scalers operate at up to 35,000 cycles per second. In general, the ultrasonic scalers are quieter and scratch the tooth surface less. Sonic Scalers are air driven by the compressor and place a large load on the compressor.
- Q. What happens to me if my Dentalaire dental station breaks down 6 months after my warranty has expired?**  
 A. Please call us at (800) 866-6881 to discuss your problem. Your satisfaction is our main goal. Many times we can trouble shoot over the phone to solve the problem.
- Q. What needs to be done to keep the Dentalaire Dental Station running smoothly?**  
 A. A. Always Always lubricate high speed handpieces. Check instructions for lubricating low speed handpieces. Some low speed handpieces do not need lubrication. If in doubt, ALWAYS contact Dentalaire Products Technical Support.  
 B. Use only distilled water in dental station to prevent build up in the lines and handpieces.  
 C. Follow compressor maintenance chart. This takes only one minute per day.  
 D. Make sure oil level is visible in the glass eye (at least half way up) on the back side of the compressor.  
 Please note: Oil level is too high when you do not see any air bubble. If this happens, do not run compressor and call Dentalaire.
- Q. What options do clinics usually add to their dental unit?**  
 A. A. Fiberoptic Illumination in High-Speed Handpiece or Piezo LED. This feature greatly improves your visibility .  
 B. Adding a piezo scaler to any two handpiece unit  
 C. Standard straight tubing or curled tubing that stretches.
- Q. Does Dentalaire repair other companies equipment and handpieces?**  
 A. Yes we do.
- Q. Can I use other companies' handpieces in my new Dentalaire station?**  
 A. Yes in most cases. Any standard “four-hole” handpiece will work with your Dentalaire station.
- Q. My bur got stuck in my high speed handpiece. How can that happen?**  
 A. By not putting the bur all the way in. This can cause small nicks in the shaft of the bur, causing it to become stuck. The tolerances for the shaft of the burs are very close, and even microscopic nicks in the shafts will not allow the burs to slide freely.
- Q. How long does the light stay on in the high speed fiberoptic handpiece?**  
 A. About 12 seconds after stopping the handpiece.
- Q. Can I get suction in a Dentalaire system? Do I need to have suction?**  
 A. Yes, you can get suction in a Dentalaire station. This requires a dual head compressor or special order with any other unit.
- Q. When would I need a bigger compressor for my Dentalaire Dental Station?**  
 A. If you desire suction or want to use a sonic scaling handpiece as your main method of scaling, you should consider a one horsepower SilentAire compressor. Suction and sonic scalers place a much larger load on a dental compressor.

Product #	Item	Hi Speed	Low Speed	Water & Air	Piezo Scaler	Pneu. Arm Lift	Mobile Cart	Counter Top	Wall Mount	Table Mount	Fiber-optics	P. Button Bur	Compressor
DTP00494	Dentalaire II	X	X	X			X					X	
DTP00495	Dentalaire II	X	X	X			X					X	X
DTP00500	Dentalaire II	X	X	X				X				X	X
DTP00504	Dentalaire III	X	X	X	X			X				X	X
DTP00503	Dentalaire III with Cabinet	X	X	X	X			X				X	X
DTP00509	Ultimate Vet Dental Station	X	X	X	X		X				X	X	X
DTP00510	Dentalaire III	X	X	X	X		X				X	X	
DTP00511	Prestige	X	X	X	X	X	X				X	X	X
DTP00550	Cabinet to Countertop Unit												
DTP00600	Two Handpiece	X	X	X					X			X	
DTP00601	Two Handpiece	X										X	X
DTP00607	Dentalaire Basic	X	X	X						X		X	
DTP00608	Dentalaire Basic	X	X	X						X		X	X
DTP00777	Upgrade any Dentalaire II System to Piezo Scaler												
DTP00470	Upgrade any system to Fiber Optic push button High Speed												

**Or Custom Build your own Dental Station!**

All **Countertop Dental Systems (and Table Systems)** come with a **1000ml. water bottle**, which mounts on the inside of the compressor. The **Mobile, Wall Mount, and Table Mount Systems** come with a quick connect **1500ml. water bottle. Distilled water is RECOMMENDED! The Prestige and Ultimate Dental Systems have (2) 2 liter water bottles. Distilled water is recommended!**

All Dental Stations include a FREE Dental Vet Package: 10 Friction Grip High Speed Burs, Stainless Steel Prophy Angle, Vetcare Prophy Paste (250gm jar), Prophy Cups (box of 144).



**Prestige Dental Station System features:**

1. Internal storage
2. Telescopic pneumatic arm height adjustment from 37.5" down to 28"
3. Fiber optic push button high speed hand piece
4. Low speed hand piece
5. Piezo LED lighted scaler
6. Three way syringe
7. Variable speed foot control
8. 2 - 2 liter water bottle system
9. Quick disconnect pressurized water connection
10. Silent air compressor 1/2 HP  
Internal powder-coated air tank  
Dual filtration system for the cleanest air
11. Dental Vet Package: 10 Friction Grip High Speed Burs, SS Prophy Angle, Vetcare Prophy Paste (250gm jar), Prophy Cups (box of 144) and Once a Day Spray
12. 2 year warranty excluding handpieces & piezo

\*SilentAire Oil-less Compressor Available  
Two Year Warranty



DTP00511 – Prestige Dental Station  
Additional information located on back cover.

**Ultimate Dental Station System features:**

1. Telescopic height adjustment from 38.5" down to 27"
2. Fiber optic push button high speed hand piece
3. Low speed hand piece
4. Piezo scaler
5. Three way syringe
6. Variable speed foot control
7. 2 - 2 liter water bottle system
8. Quick disconnect pressurized water connection
9. Silent air compressor 1/2 HP  
Internal powder-coated air tank  
Dual filtration system for the cleanest air
10. Dental Vet Package: 10 Friction Grip High Speed Burs, SS Prophy Angle, Vetcare Prophy Paste (250gm jar), Prophy Cups (box of 144) and Once a Day Spray
11. 1 year warranty excluding handpieces & piezo

\*SilentAire Oil-less Compressor Available  
One Year Warranty



DTP00509 – Ultimate Dental Station



**Dentalaire III Systems all have these basic features:**

1. High Speed Push Button Handpiece
2. Low Speed Handpiece
3. Piezo
4. Water and Air
5. One Year Warranty



**Dentalaire II Systems all have these basic features:**

1. High Speed Push Button Handpiece
2. Low Speed Handpiece
3. Water and Air
4. One Year Warranty

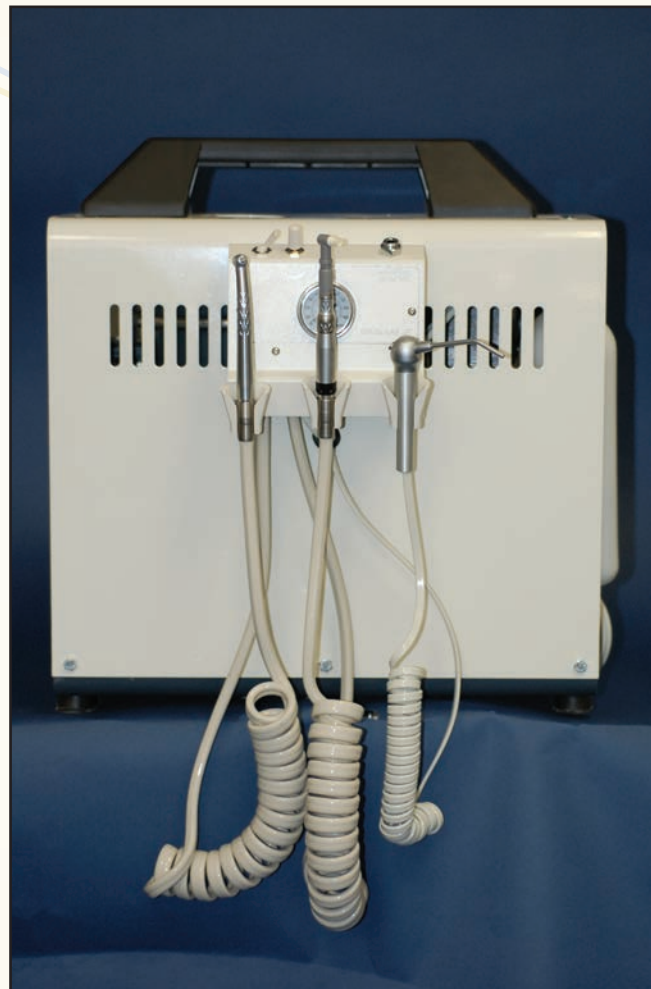
**There are many models to choose from and can be custom designed.**

Please refer to the equipment comparison chart on page 30 to see which features and options that certain dental systems have. Thank you!

- DTP00494 – Dentalaire II without compressor
- DTP00495 – Dentalaire II with compressor
- DTP00510 – Dentalaire III with Piezo Scaling, without compressor
- DTP00509 – Dentalaire III / Ultimate Dental Station with Compressor
- DTP11310 – Compressor Oil 22oz. (should be changed yearly.)

All Dental Stations include a FREE Dental Vet Package: 10 Friction Grip High Speed Burs, Stainless Steel Prophy Angle, Vetcare Prophy Paste (250gm jar), Prophy Cups (box of 144) and Once a Day Spray

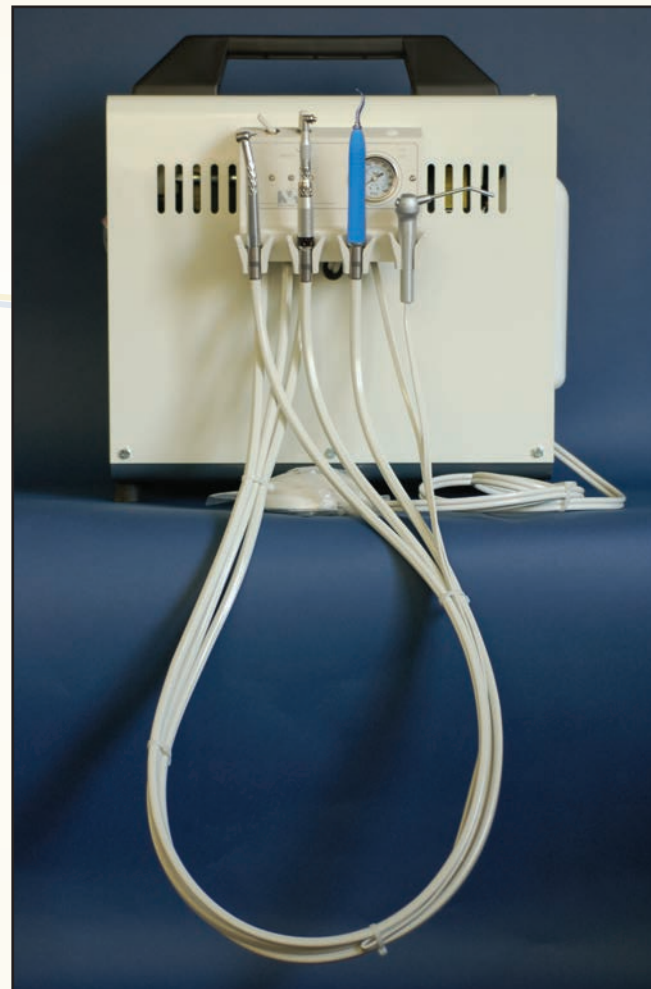
## COUNTER TOP SYSTEMS



DTP00500

### Dentalaire II Systems all have these basic features:

1. High Speed Push Button Handpiece
2. Low Speed Handpiece
3. Water and Air
4. One Year Warranty



DTP00504

### Dentalaire III Systems all have these basic features:

1. High Speed Push Button Handpiece
2. Low Speed Handpiece
3. Piezo Scaler
4. Water and Air
5. One Year Warranty

*There are many models to choose from and can be custom designed.*

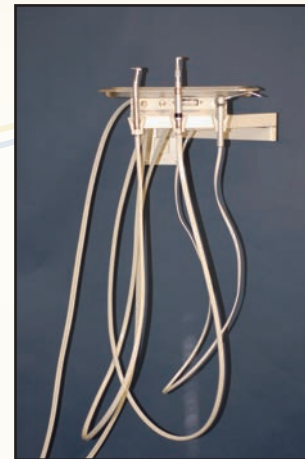
Please refer to the equipment requirement chart on page 30 to see which features and options that certain dental systems have. Thank you!

- DTP11310 – Compressor Oil 22 oz. (should be changed yearly.)
- DTP00500 – Countertop Two Handpiece System with compressor
- DTP00504 – Countertop Three Handpiece System with compressor
- DTP00503 – Three Handpiece System with cabinet

All Dental Stations include a FREE Dental Vet Package: 10 Friction Grip High Speed Burs, Stainless Steel Prophy Angle, Vetcare Prophy Paste (250gm jar), Prophy Cups (box of 144) and Once a Day Spray

## WALL MOUNT & TABLE MOUNT DENTAL SYSTEMS

### WALL MOUNT DENTAL SYSTEMS



### Two Handpiece System (pictured) has these basic features:

1. High Speed Push Button Handpiece
2. Low speed Handpiece
3. Water and Air

### Three Handpiece Systems all have these basic features:

1. High Speed Push Button Handpiece
2. Low speed Handpiece
3. Piezo Scaler
4. Water and Air

### DENTALAIRE BASIC TABLE MOUNT DENTAL SYSTEMS



- DTP00600 – Wall Mounted Two Handpiece System without compressor
- DTP00601 – Wall Mounted Two Handpiece System with compressor
- DTP00607 – Table Mounted Two Handpiece System without compressor
- DTP00608 – Table Mounted Two Handpiece System with compressor

All Dental Stations have a One Year Warranty and include a FREE Dental Vet Package: 10 Friction Grip High Speed Burs, Stainless Steel Prophy Angle, Petcare Prophy Paste (250gm jar), Prophy Cups (box of 144).

### DUAL USER SILENTAIRE COMPRESSOR



Overall dimensions: 19" high, 27.5" wide, 13" deep  
Tank: 6.5 gallons  
Capacity: 1 HP, 110V Motor delivers 4.3 CFM @ 80 PSI  
Weight: 100 lbs.  
DA100-24

### SILENT AIR COMPRESSOR



Overall dimensions: 19" high, 8" wide, 18" long  
Tank: 2 Gallons  
Capacity: 1/2 HP Motor delivers 2.1 CFM @ 80PSI  
110 V  
Weight: 60 lbs  
DA50-9D  
SilentAire Oilless Compressor NOW Available! 5/8 HP

### AVS VACUUM SYSTEM



AVS self contained air powered Vacuum System. For optimal use, Dual User Silent Air Compressor should be ordered.

Part Number: "AVS"

### STERIDENT VACUUM SYSTEM



DA8009PD

Steri-dent PORTO-DENT II Mobile Evacuation Unit. Efficient, Adjustable motor speed can evacuate indefinitely at the rate of 75 cfm, or can be adjusted. Compact (13" x 16" x 26") Easy Maintenance, Non-corrosive collection canister cleans easily and is equipped with an automatic overflow shut-off. Motor: One year warranty.

DTP44810

Highly Flexible Light Pipe- Twice as long as conventional pipes

1 LED - 3x the typical light output; pinpoint accuracy; true tissue color rendition

Touchless On/Off

WelchAlllyn  
Advancing Frontline Care™

PROUDLY BROUGHT TO YOU BY:  
SATELEC  
**ACTEON**

COCOON SPRAY ULTRASONIC SCALER



DTP24484V

The Cocoon Spray includes the innovative addition of a water spray micro motor hand piece that disperses water onto the tooth for cooling from an external water source (water source not included). Water is available from both handpieces!

Equipped with the piezoelectric technology developed by Satelec this unit guarantees you:

- Rapidity: the mechanical elimination of deposits is assisted by cavitation;
- Optimal control of the instrument: contrary to its ultrasonic competitors, the module generates perfectly-controlled, linear vibrations;
- Power: the self-regulated frequency from 27 to 32KHz and the automatically-controlled power (feedback effect) gives the Cocoon Spray much greater power than pneumatic scalers;
- Ability to upgrade: Satelec provides you with probably the widest choice of ultrasonic tips on the market.

Included with your Cocoon:

- #1 Scaling tip
- #2 Scaling tip
- #10P Scaling tip
- Latch type Contra angle
- Straight nose cone
- Prophy Angle
- Prophy Cups



Mounting Plate to attach as shown  
DTP44811

The GS Exam Light IV features:

- A compact, unobtrusive head, ensuring pinpoint accuracy
- A whiter, brighter light than halogen, so you see true tissue color rendition during an exam
- Less energy consumption
- No bulb replacement
- Easily Mounted to Your New Dentalaire Prestige Dental Station.

DENTALAIRE ELECTROSURGERY UNIT

DTP00805

Electrosurgery Unit



- All cord lengths are specifically designed to allow ease of use for intra oral surgery – 12 FT
- User friendly control panel
- Safely designed electronics
- Minimal scar tissue
- Minor to high demand dental surgery
- Cut, COG 1 & COG 2 mode
- 10 level power setting
- 7 pc. Various standard electrodes

**NEW!**  
Designed Especially for Veterinary Dentistry by a Veterinary Dentist.



DTP00795

Scaling Kit (Autoclavable blue metal box with universal tip wrench and tips) - The most powerful and compact veterinary scaler around.

The SUPRASSION P5 VET offers the veterinarian a wide choice of instruments, simple and efficient adjustment and a separate irrigation system for the professional maintenance and of the dentition of small animals.

Piezo ultrasonic unit featuring high technology and functional design. Minimum size and maximum power. Suitable for all treatments from the most delicate to the most demanding – just one selector for the power modes: perio, endo, scaling and boost.

PROUDLY BROUGHT TO YOU BY:

SATELEC  
**ACTEON**



DTP00797

Scaling Kit (Autoclavable blue metal box with universal tip wrench and tips) - The most powerful and compact veterinary scaler around.

Newtron® technology on the world's best selling ultrasonic device by SATELEC. In addition to all the advantages of the P5, the P5 Newtron LED® is equipped with a Newtron® Autoclavable light handpiece.

Consider the benefits

- Linear tip vibration provides more comfort for your patients
- Vibration-free handpiece provides increased tactile sensation
- No heat build-up in handpiece means less water required and your patients stay dryer
- "Cruise Control System™" provides maximum performance more power and control for a variety of applications
- Patented color coded scaling system
- Two year warranty



DTP00773

Pressurized water bottle for counter top units.



DTPFOO246  
Satelec #1  
Universal Tip

Treating simple cases and gross supra-gingival scaling. Tangential orientation to the tooth surface.



DTPFOO247  
Satelec #2  
Voluminous  
Calculus

Removing voluminous supra-gingival deposits, flat end to apply to the surface of the teeth.



DTPFOO253  
Satelec #10P  
Shallow  
Pockets

Fine tip designed for scaling shallow pockets, greater irrigation than other tips.

DTPFOO248  
(Not Pictured)  
Satelec #3  
Stains /  
Voluminous

Removing stains and voluminous supra-gingival deposits, flat end to apply to the surface of the teeth.

Other Satelec tips available, call for details

## DENTALAIRE SCALERS

### SCALEX 880 PIEZO ULTRASONIC SCALER



DTP00776

#### Features:

- Self-tuning and load adjusting for maximum smooth operation
- Extremely gentle on patients
- Runs cool and quiet
- Compact size with slim lightweight handpiece.
- Includes 3 autoclavable tips, 2 universal and 1 flat.

#### Replacement Tips

- DTP00781 – Universal
- DTP00782 – Flat
- DTP00783 – Special/Perio
- ONE YEAR WARRANTY

### SCALEX-800 CAVITRON ULTRASONIC SCALER



- DTP00772  
Available in 25K or 30K  
Complete with Cavitron Insert  
DTP00772 - 25K  
DTP00787 - 30K  
ONE YEAR WARRANTY

### SCALEX SELF CONTAINED PIEZO ULTRASONIC SCALER



- Self-contained solution tank allows for convenient portability
- One touch selection between tank and external water source
- State of the art piezoelectric self-tuning and load adjusting technology for smooth and effortless operation
- Innovative water cooled circuitry designed for greater stability during operation

### ROTEX 780 MICRO MOTOR



DTP00780

- 30,000 RPM Slowspeed Handpiece
- Prophy Angle with Prophy Paste & Cups
- Contra Angles with Cutting Burs
- Variable Speed Foot Control
- One Year Warranty

### RAM 1000 MICRO MOTOR

#### COMPLETE PROPHY & RESTORATIVE UNIT

DTP103RM



#### RAM MICRO-CAD RECHARGEABLE POLISHER

DTP104RM



Micro-torque control circuitry design that provides smooth constant power at all speeds. It has 5 sealed ball bearings (3 in front nose cone). It can be operated by hand or foot and goes from a crawl to 35,000 RPM. Also will go forward and in reverse. Comes complete with a prophy angle, prophy paste and cups, a contra angle with burs and a diamond disc cutting wheel. ONE YEAR WARRANTY Made in the USA

Fine 25k



DTP10880

Fine 30k



DTP10881

Wide 25k



DTP10879

# DENTALAIRE

Meeting and Exceeding the Needs of Veterinary Dentistry since 1988  
www.DentalaireProducts.com  
800.866.6881



## DENTALAIRE DTX

### Dental Imaging System



- Embedded High speed USB 2.0 interface for direct connection to the PC
- State of the art image quality achieved with CSI scintillator and fiber optic plate (FOP)
- Highly reliable design with patented cable output and watertight housing
- 2 year sensor warranty
- The best DICOM software capabilities in the market
- Our software features canine, feline and equine tooth charts with species and breed selections
- Integration with all major practice management applications
- 1 Year phone and web based support included



- Cable side housing + cable**
- Patented highly reliable cable output
  - Integrated Kevlar wire for further reliability
- Electronic substrate**
- Ceramic material for improved performance
  - Proximity electronic
- CMOS Image sensor**
- Patented technology with cut corners
- Fiber Optic Face Plate (FOP)**
- Advanced image quality
- CSI scintillator**
- Optimized for resolution and low noise
- Front side housing**
- Watertight soldered to cable side housing
  - Ultra sonic welding
- Not represented :**
- EMC metallic foil around the internal elements
  - Mechanic bumper for mechanical reliability
  - highly reliable USB connector



Dentalaire DTX .....



## Technical Specifications

Description	Size 2 Sensor	Size 1 Sensor
External Dimensions (mm)	30.5 x 42.8 x 5.4	24.3 x 36.7 x 5.4
Active Image Area (mm)	26 x 36	20 x 30
Image Pixel Size	19 µm x 19 µm	19 µm x 19 µm
Number of Pixels	2.6 million	1.66 million
Theoretical Resolution	26 lp/mm	26 lp/mm
USB Connector	Hi-Speed USB 2.0	Hi-Speed USB 2.0
Cable length	10 feet	10 feet
Warranty	2 years	2 years

Computer requirements	Minimum	Recommended
Operating System	Microsoft® Windows® XP with service pack SP3	Microsoft® Windows® 7 Professional 32 or 64 bit
Processor	Intel Celeron® M 1.6 GHz	Intel® Core™ 2 Duo 2.4 GHz
Memory	512 MB	4+ GB
Hard Disk	40+ GB	120+ GB

## Computer Requirements



### TELEREX X-RAY FILM VIEWER



DTP00800

- Special CCD & LED technology offers instant viewing of dental X-ray film on a TV or computer monitor.
- View old X-ray film or digitize and archive them to your computer.
- Optional USB Video Grabber enables the Telerex to connect to the computer via the USB port.
- Improves communication between the doctor and patient with enlarged viewing
- Compact and stylish design with spring loaded film tray, only 9.4 x 9.2 x 7.2 cm.
- Special film adapter included for Pedo size X-ray film.
- 100-240V universal voltage, NTSC or PAL available.

### BioRay Intra Oral Camera



DTP62400

- Excellent resolution with Max display 1280 x 1024 (1.3 megapixel High Resolution images)

#### Technical Specifications:

- Image Sensor - 1/4" CMOS
- Image Resolution - 1280x1024
- Video Output - Fully Digital
- Light Resources - 6 White LEDs
- Focus Range - 7m~
- View Angle - 90 Degrees
- Handpiece Weight - 35g
- Dimensions - 20 x 23 x 193 mm
- Power Supply - USB Powered
- USB Cable Length - 3 meters

### MINI X-RAY VIEWER



DTP10500 Colors: Grey & Blue  
 DTP10501 Replacement Bulb

### CHAIRSIDE DARKROOM



#### Complete with:

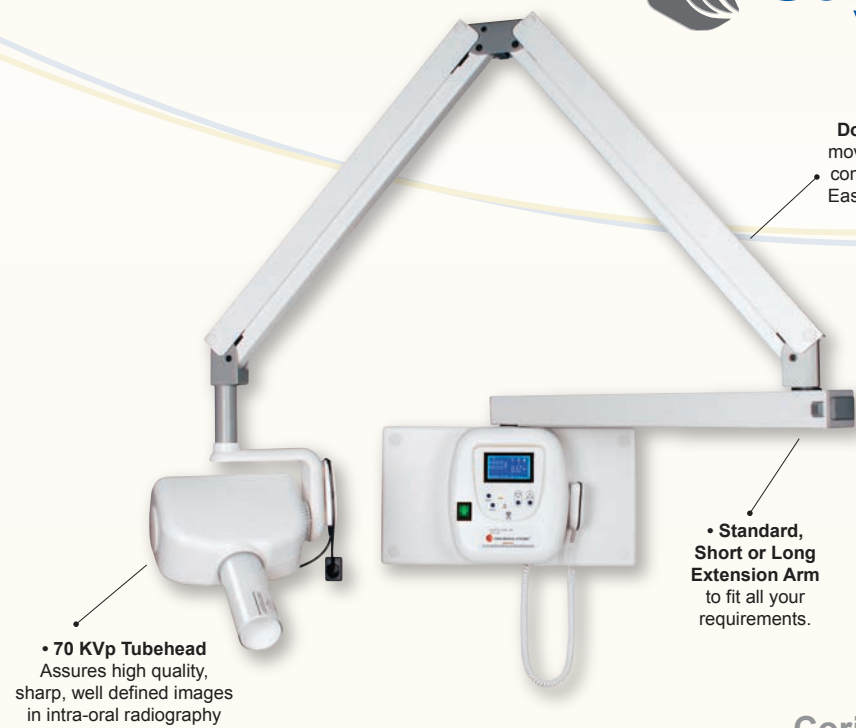
- X-Ray Fixer
- Developer
- Film clips (Set of 3)
- Convenient
- Easy to use
- Cost effective

DTP10115

### X-RAY ITEMS

- DTP10439 – KODAK X-Ray Film #0, box of 100 (DF-54)
- DTP10440 – WOLF X-Ray Film #2, box of 100 (D-Speed)
- DTP10441 – KODAK X-Ray Film #2, box of 150 (DF-58)
- DTP10455 – KODAK X-Ray Film #4, box of 25 (DF-50)
- DTP10431 – Film Carriers (for film #2) Pk. of 25
- DTP10432 – Film Carriers (for film #4) Pk. of 25
- DTP10460 – X-Ray Film Clips, Pk. of 3 (Useful in film developing)
- DTP10430 – X-Ray Film Holder (autoclavable)
- DTP10433 – X-Ray Film Mounts #2 (100) (For film storage)
- DTP10434 – X-Ray Film Mounts #4 (25) (For film storage)
- DTP10484 – X-Ray Developer (quart)
- DTP10486 – X-Ray Fixer (quart)
- DTP10485 – X-Ray Fixer/Developer (set of 2)
- DTP10442 – Size 1 X-Ray Film (100) KODAK
- DTP10443 – Size 3 X-Ray Film (100) KODAK

# Corix® Pro 70 Vet Dental X-Ray



• **Long reach Double Positioning Arm** moves effortlessly and folds compactly when not in use. Ease of positioning and drift free stability.

• **Standard, Short or Long Extension Arm** to fit all your requirements.

• **70 KVp Tubehead** Assures high quality, sharp, well defined images in intra-oral radiography

Corix Pro 70 Wall Mount, DTP60800



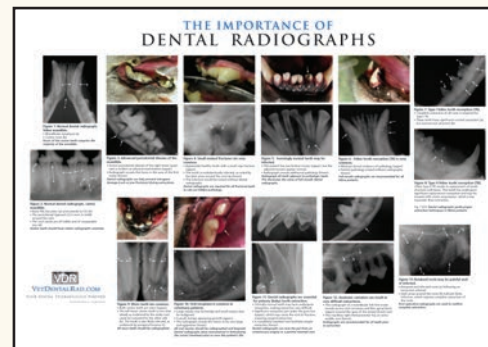
Corix® Pro 70  
Mobile Stand, on a sturdy and stable rolling stand.

Corix Pro 70 Mobile Stand, DTP61300

Corix® Pro 70  
Wall mount, also for side-by-side operatory stations.



Corix Pro 70 Vet Dental X-Ray is compatible with any digital dental system.



DTP61000 – Vet Dental Rad X-Ray Poster  
- Educational Poster - Great for Waiting Rooms and Patient Exam Rooms

DTP62500 – Woodward/Neimiec Radiology DVD  
- Educational Instructional DVD presented by Dr. Tony Woodward and Dr. Brook Niemiec, **Radiology Simplified**. Includes dental radiology positioning instruction.

## NEED HELP?

- DTP61097 – A Color Handbook Small Animal Dental, Oral & Maxillofacial Disease, Brook A. Niemiec
- DTP61011 – A Color Handbook Small Animal Dental, Oral & Maxillofacial Disease, Soft Cover
- DTP61010 – Veterinary Endodontics, Hard cover, Brook A. Niemiec
- DTP61011 – Veterinary Endodontics, Soft Cover, Brook A. Niemiec

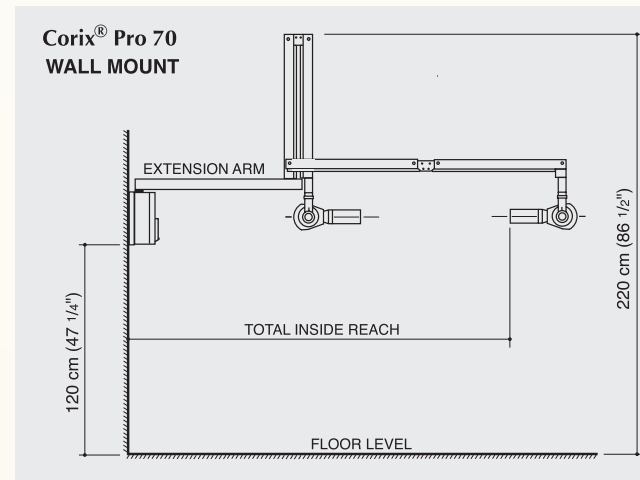


## 70 KVp Tubehead

The 70KVp-8mA Tubehead with a small focal spot, low energy filter and beam limiting device assures outstanding sharpness and maximum details in intra-oral radiography. Positioning is made easier with an angle indicator on both sides of the unit. Lead shields and critical components are oversized to provide more years of safe and trouble free operation.

## Hand Held Digital Exposure Timer

A new generation of small size, 3 digit remote controller with a 1/100 of a second resolution, fully compatible with the fastest film or a filmless digital imaging system. 9 factory pre-set memories, patient size, film or digital sensor, or manual override if required. Automatic compensation for the main voltage variations. All of above and more in a controller that fits into the palm of your hand. Optional Remote Timer Configuration, should the controller be located outside the operatory.



## Long Reach Double Positioning Arm

The long reach scissors arm moves effortlessly through a wide area, yet folds compactly when not in use. Ease of positioning and drift free stability.

## Standard, Short or Long Extension Arm (Wall Mount version)

Designed to fit your requirements:  
Standard Extension Arm provides a total inside reach of 180.6 cm. ( 71 1/8" )  
Short Extension Arm provides a total inside reach of 135.6 cm. ( 53 3/8" )  
Long Extension Arm provides a total inside reach of 190.5 cm. ( 75" )

## Corix® Pro 70 is a wall mounted or mobile system

Conditions in your practice will dictate where to perform x-ray examinations. With the Corix Pro 70 you can choose the option that best fits your needs:

### Corix® Pro 70 Wall Mount, DTP60800

Wall mounted in the x-ray room or directly in the treatment room, even for side-by-side operatory stations.

### Corix® Pro 70 Mobile Stand, DTP61300

Mobile stand, to reach separate operatory stations on a sturdy and stable rolling stand.

**1 Year Warranty. Price does not include installation.**

## Technical Features

<b>RATED LINE VOLTAGE</b>	120V. +/- 10% (109-132 V.a.c.), 50/60 Hz.
<b>POWER CONSUMPTION</b>	1.050 KW max @ 132 V.a.c.
<b>RATED TUBE POTENTIAL</b>	70 KVp +/- 7% (Single phase, self rectifying).
<b>RATED TUBE CURRENT</b>	8 mA +/- 15% @ 120 V.a.c.
<b>EXPOSURE TIME RANGE</b>	0.03 to 3.00 s., in steps of 0.01 s. Plus 9 pre-set exposure times, with automatic main voltage compensation. A pre-heating time of 0.15 s. for loading the x-ray tube is not shown on the display.
<b>MINIMUM FOCAL SPOT TO SKIN DISTANCE</b>	200 mm. ( 8" )
<b>RADIATION LEAKAGE @ 1 m.</b>	Less than 50 mR/h (Technical Factors: 70KVp, 8 mA, 1 s.).
<b>FOCAL SPOT</b>	0.8 x 0.8 mm.
<b>TOTAL FILTRATION</b>	2 mm. Al eq.
<b>NET WEIGHT</b>	Mod. WM (Wall Mount): 28 Kg. Mod. MM (Mobile Stand): 40 Kg
<b>SHIPPING WEIGHT</b>	Mod. WM (Wall Mount): 33 Kg. Mod. MM (Mobile Stand): 46 Kg.
<b>SHIPPING DIMENSIONS</b>	Mod. WM (Wall Mount): 1 Box, 131 x 52 x 26 cm. Mod. MM (Mobile Mount): 2 Boxes, 111 x 34 x 19 cm., and: 86 x 34 x 33 cm.

Corix Medical Systems® reserves the right to modify the design and specifications without prior notice.

® Corix, and: Corix Medical Systems, are Registered Trademarks.

## DENTALAIRE X-RAY PRODUCTS

### LEAD APRON



.50mm (Middleweight),  
24" x 36"  
Most popular colors:  
Burgundy, Teal, Royal Blue  
DTP63001

.50mm (Middleweight),  
24" x 42"  
Same colors as above  
DTP63011

80Kv

### THYROID COLLAR



.50mm provides protection to the neck area.  
The collar is in place with a Velcro closure.  
Most popular colors: Burgundy, Teal, Royal Blue.  
DTP75060

### SITZMAN SHIELDS



DTP01503 – Sitzman Shield  
Small 12 x 12 Xray Shield  
DTP01514 – Sitzman Shield  
Large 12 x 18 Xray Shield

While The Sitzman Shield is engineered to attenuate the direct beam of a dental X-ray machine, it is intended to be used as an aid in decreasing exposure from scatter radiation. This product is not a substitute for proper training in radiation safety.

### COMFORT FLEX X-RAY GLOVES



.50mm, a five finger molded glove which offers even more flexibility than normal gloves. Excellent for any application requiring dexterity for small detailed work. The exterior finish can be cleaned with soap and water. Sizes available: Small, Medium, Large.  
DTP12406 (pair)

- More flexibility than normal gloves
- Excellent for any application requiring small detailed work
- Exterior finish is easily cleaned with soap and water

## HANDPIECE PARTS & ACCESSORIES

### PUSH BUTTON CONVERSION CARTRIDGE

Changing burs is as easy as pushing a button!



DA400RC – Standard Replacement Cartridge  
DA400CP – Cap Only  
Made in the USA



DA310BT – Handpiece Bur Changer



DA400RCA – Push button replacement turbine with cap  
DAWR100 – Cap Tool  
DA400 – Cap Only  
DANSK-A485 – Turbine Only  
Made in the USA



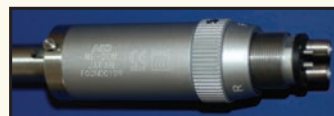
DA400FOB - Fiberoptic Bulb



DA2500SNC - E-Type Straight-nose cone  
20,000 RPM



DA2500ECA - E-Type Contra-Angle, Latch



DA2500EM - E-Type Motor  
20,000 RPM



DA400CH – High Speed Replacement Chuck for standard turbine  
Made in the USA

## HIGH SPEED HANDPIECES



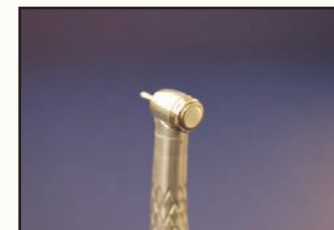
DA400A – Standard High Speed Handpiece  
Made in the USA



DA400APB – High Speed Handpiece with push button  
Made in the USA



DA400AFOPB – Push Button High Speed Fiber Optic Handpiece, Made in the USA



DA400AFO – Fiber Optic standard handpiece,  
Made in the USA



DA400LED – NEW! LED High Speed Handpiece

Retrofit any air powered dental station with LED lighting.  
Built in Generator, no fiber optic light source needed.

DA400LEDTURB – Replacement turbine for DA400LED

### SCALER HANDPIECE



SONIC AIR SCALER HANDPIECE  
DA6000AS – Sonic Air Scaler with 3 Tips

## LOW SPEED HANDPIECES



DA600HA – Low Speed Handpiece Hygienist (5000 RPM)  
with push/pull chuck system



DA600A – Lube Free - Light Weight - Low Speed Handpiece Standard (5000 RPM)  
with opening & closing chuck system and reverse



DA557FG – Contra Angle Attachment

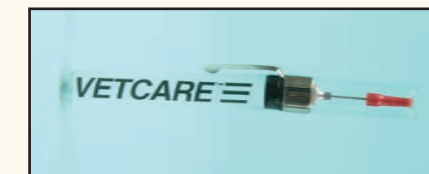


DA553UL – Contra Angle Attachment



DA700A – Low Speed, Light Weight, Lube Free Handpiece (5000 RPM)

DA400SLS – Push button fiber optic swivel handpiece (Not pictured), Made in the USA



DA100PL – PEN-LUBE Handpiece lubricant with fine needle tip applicator  
1/4 oz.

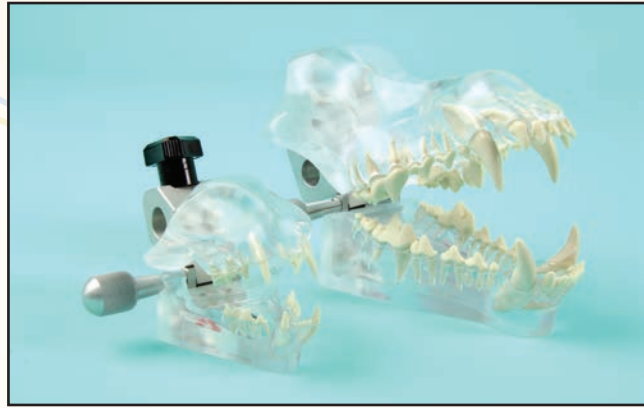
DA400GAS – Gasket for 4-hole handpieces

DA500GAS – Gasket for fiberoptic handpiece



DA100SL – ONCE-A-DAY Handpiece Lubricant  
8 oz. can

## VETERINARY DENTAL MODELS



### For Dental Education and Demonstration

Transparent and firm smooth plastic models with removable and replaceable teeth. Graphically shows important anatomical relationships.

DTP101VMD Canine    DTP101VMDCO Canine w/Gingiva  
DTP102VMC Feline    DTP102VMCCO Feline w/Gingiva  
DTP103VMDC Combo Canine and Feline

## SHARPENING SYSTEM

The only sharpening system designed to maintain and restore instruments to a like new condition. Save time and \$\$\$ on your surgeries. Sharp instruments make your job easier. This machine will properly sharpen: Elevators, Curettes, Scissors, Olsen Hegar Needle Holders, Orthopedic Instruments and much more. Most instruments can be sharpened in 2 minutes or less. Used in dental practices, hospitals, and in veterinary clinics for over 30 years. You can't afford not to have it. Give it a try! You'll be glad you did.



DTP90602-RX Sharpening System II

3 YEAR WARRANTY

Made in USA



## RX HONING WORK STATION

Includes Lamp, Magnification and Base

DTP90601

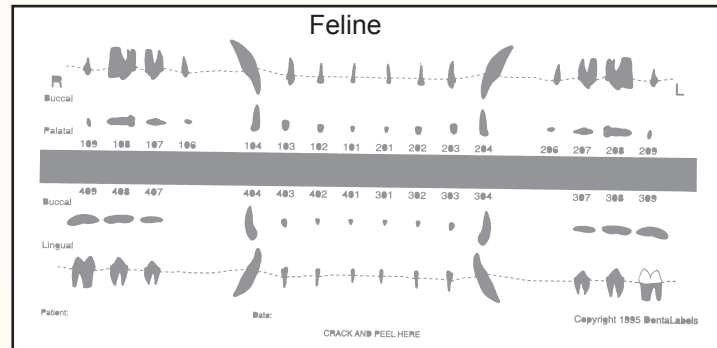
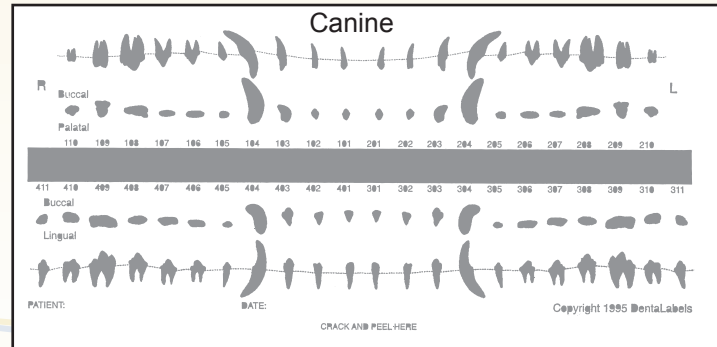
Heavy duty shaft provides pencil control in the honing of intricately shaped cutting edges.

DTP XXXXX



## RX HONING FLEX SHAFT

## DENTAL CHART STICK-ON LABELS



DTP20340 – Starter Kit - 25 Canine / 25 Feline  
DTP20341 – Canine Refill - 50  
DTP20342 – Feline Refill - 50

## OptiVISOR



DTP90608 – DA-2 (1-1/2 x at 20")

DTP90609 – DA-3 (1-3/4 x at 14")

DTP90610 – DA-4 (2 x at 10")

DTP90612 – Light for visor

### OPTICAL GLASS BINOCULAR MAGNIFIER

- Leaves both hands free
- Optical polished (not plastic) glass lens
- Tilts up when not in use
- Adjusts to all head sizes • Leather comfort band
- Can be worn over prescription or safety eyeglasses

## VETERINARY DENTAL EDUCATION

Even the best equipment requires some knowledge to use effectively. DentaIre is pleased to recommend the dental training classes presented by Dr. Tony M. Woodward DVM, AVDC. Dr. Woodward is board certified in veterinary dentistry, and has trained hundreds of doctors and technicians in practical veterinary dental techniques. His experience in starting multiple veterinary practices makes him uniquely qualified to teach those techniques most useful for small animal practitioners. His facility is located one hour south of Denver, in beautiful Colorado Springs, Colorado. High instructor to student ratios and excellent equipment ensure a quality training experience for all participants. In just two days, the Level I and II classes provide a solid base for dental care. Classes are a combination of lecture and wet lab, and include handouts, continental breakfast, lunch, lab materials, individual specimens, and complimentary instrument/material sets.

### Course Content:

**Level I** is for both technicians and doctors and lasts a full day for eight hours CE credit. Class size is limited to 14 participants. Topics include dental cleaning, oral pathology, instrumentation, equipment, dental radiology, and digital dental radiography systems. This class will give you the skills required to deliver an excellent cleaning procedure, identify oral pathology and take and interpret diagnostic dental radiographs. The wet lab portion focuses on obtaining and interpret diagnostic dental radiographs. 3-4 four instructors teach the lab section.

**Level II** is for doctors only and lasts a full day for 8 hours CE credit. Class size is limited to eight participants. Topics include surgical extraction technique, introduction to periodontal surgery, oronasal fistula repair, local/regional anesthesia, and bonded sealants for fractured teeth. Three instructors ensures a high level of individual attention. A new set of extraction instruments is included for each participant, and no one is required to share equipment.

**Level III** is for doctors only and lasts 1 ½ days for 12 hours CE credit. Class size is limited to eight participants with two qualified instructors plus lab assistants. Topics include restorative dentistry, wire/acrylic splints for oral fractures and luxation injuries, and surgical periodontal therapy. Class time is heavily weighted toward laboratory work. Participants receive an instrument/materials kit worth well over \$1000.

**Level IV** will cover endodontics and is currently in development. Class size will be eight doctors and the class will likely last 4-5 days.

Classes are scheduled on Fridays and Saturdays throughout the year. For more information and class availability, contact The Colorado Pet Dental Training Center at **(719) 536-9949** or go to [www.vetdentalclasses.com](http://www.vetdentalclasses.com).

