

SMC Filter and O-ring Replacement

C00PM-2

Preparation and Disassembly

Step 1



Depressurize the compressor.

Before starting any work, ensure the compressor is completely depressurized.

Step 2

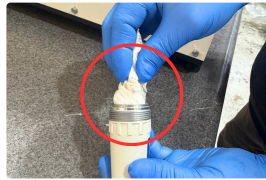


Remove pressure bowls.

Unscrew both pressure bowls counter-clockwise. This task may be possible by hand, but large pliers might be necessary if the parts are tight

Cleaning and Filter Replacement

Step 3



Clean components.

Thoroughly clean the pressure bowls and all filter assemblies using alcohol.

Step 4



Replace regulator filter (white filter).

Remove the old white regulator filter by unscrewing the black retaining nut at the bottom of the filter counter-clockwise.

Step 5



Install the new filter (white filter).

Install and secure the new filter by turning the black retaining nut clockwise.

Cleaning and Filter Replacement Continued...

Step 6



Replace coalescent filter (black filter).

Remove the old black coalescent filter by unscrewing it counter-clockwise.

Step 7



Install the new filter.

Screw on the new black filter clockwise.

Reassembly

Step 8



Replace o-rings.

Remove the old o-rings from the pressure bowls and install the new o-rings.


Step 9



Reattach pressure bowls.

Screw the pressure bowls back onto the assembly clockwise until snug and tight.

Need more help?

 (800) 866-6881

 customerservice@dentalaire.com