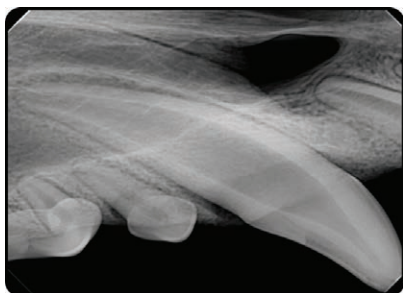
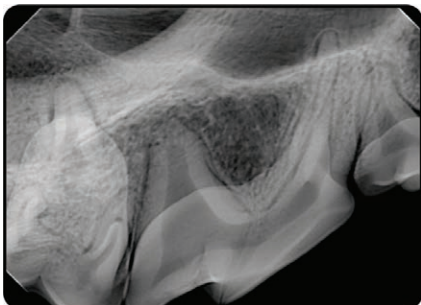


Wireless Portable X-ray



Lightweight. Powerful. Ergonomic



Take excellent x-ray images at anytime or anyplace.



DTP61307

Technical Specifications

Unit Dimensions

Height	118 mm
Width	168 mm
Depth	228 mm
Weight	4.4 pounds

X-ray Generator

Tube Voltage	70kV
Tube Current	2mA
Time Setting Range	0.5 - 1.0 second (0.01 second step)

X-ray Tube

Type	Stationary Anode
Focal Size	0.4 mm
Target Angle	12.5°
Total Filtration	2.6 mm Al (Inherent: 1.0 mm Al / Fixed Added: 1.6 mm Al)

X-ray Field

Round Type	70kV
Rectangular Type	30 x 40 mm

Display

Unit	TFT LCD
------	---------

Voltage to Use

Battery	DC 14.8 V
Charger	Input: 100~240VAC, 50~60Hz, 0.5A Output: DC16.8V, 1.0A

Warranty

Unit	1 year
Battery	6 months

The Dentalaire Portable X-ray System is an advanced high-frequency dental x-ray apparatus with fixed 70kVDC and 2mA tube current. It is designed to produce diagnostic high-quality x-rays.

- Simple operation
- Wide graphic LCD
- Lightweight and ergonomic design
- Integrated battery
- High-frequency transformer
- 0.4 mm focal spot
- Highest image quality and lowest patient dosage
- High-quality neck strap
- Zero radiation leakage
- Optimized for both analog film and digital sensor

