

DTX INTRAORAL CAMERA

A *picture* tells the story.



DTX INTRAORAL CAMERA

EXPERIENCE THE POWER OF STORYTELLING.

The DTX Intraoral Camera transforms the diagnostic journey into a clear, high-definition narrative. With 1080p Full HD and ultra-low distortion, capture high-resolution images of the patient's mouth to improve diagnostic accuracy and illustrate the progression of treatment plans.



CAPTURE HIGH-QUALITY IMAGES

- Supports 1080p resolution, providing high-definition images



PROFESSIONAL DENTAL LENS

- Professional-grade lens engineered for longevity and clarity to improve treatment plans.



RESILIENT AND LIGHTWEIGHT BY DESIGN

- Fade-resistant anodized aluminum for a lasting, easy-to-sanitize finish.



USB VIDEO CLASS DRIVER

- Plug-and-play technology means no drivers to install, just plug in and start capturing.



INSTANT INSIGHTS.

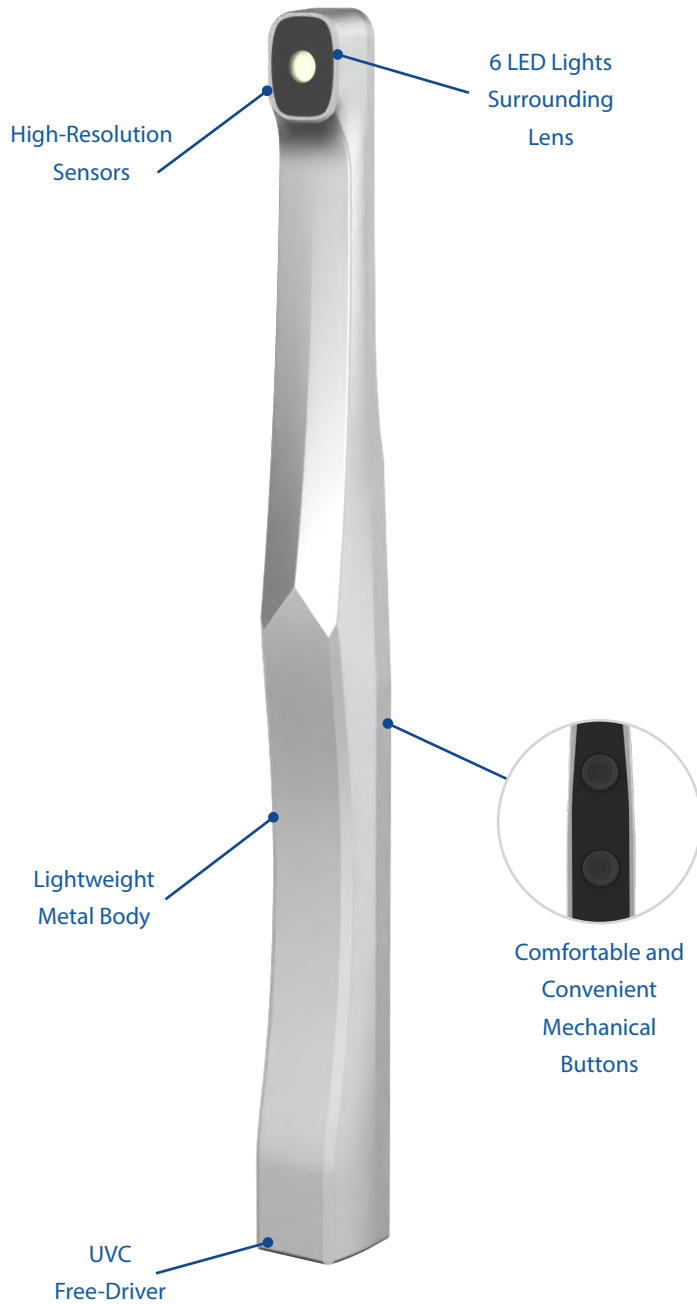
With high-speed processing and intuitive image management, the IO camera makes building digital cases and completing diagnoses almost instantaneous. The vivid visualizations do more than just document. The photos can help educate.

By showing clients the "why" behind recommendations or treatment plans, complex diagnoses can turn into clear journeys moving forward. In return, this can help increase case acceptance and trust in every treatment plan.



Before Treatment

TAKE A CLOSER LOOK.

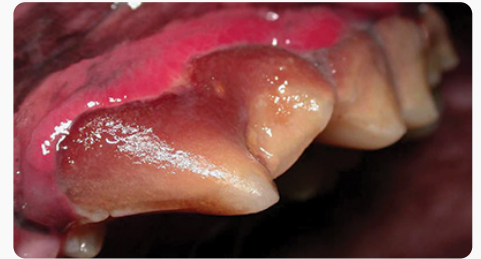


PHOTOGRAPH THE JOURNEY.

Enhance patient charts with vivid color imagery for a professional take-home report.

The Before

Capture real-time, initial images.



The Discovery and Action

Document and diagnose.

The Result and Follow-Up

Capture post-op images to validate treatment success or progress.



TECHNICAL SPECIFICATIONS

Intraoral Camera			
Resolution	1080P (1920 x 1080) 1080	Lighting	6 LEDs
Focus Range	5mm ~ 35mm	Signal Output	USB 2.0
Angle of View	≥ 60°	Operating Systems	Windows 7/10 (32 bit & 64bit)
Warranty		Dentaire Item Number	
Unit	1 year	DTP000191	DTX Intraoral Camera



www.dentaire.com | 800.866.6881 | 17742 Mitchell North, STE B, Irvine, CA, 92614 | info@dentaire.com