

Dentalaire Handheld X-ray Generator

Portable X-ray System



Handheld X-ray

Take excellent images at anytime or anyplace.

The **Dentaire Portable X-ray System** is an advanced high-frequency dental x-ray apparatus with fixed 70kVDC and 2mA tube current.

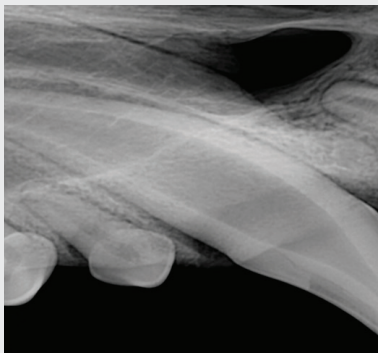
With its lightweight and ergonomic design, this device is designed to produce diagnostic high-quality x-rays.

- Zero radiation leakage
- High-frequency transformer
- Integrated battery
- 0.4 mm focal spot
- Optimized for both analog film and digital sensor



DTP61307 Handheld X-ray Generator

DTP60815 Complete Handheld Portable Imaging System



High-quality Imaging

With a 0.4 mm focal spot, this device produces the highest image quality.

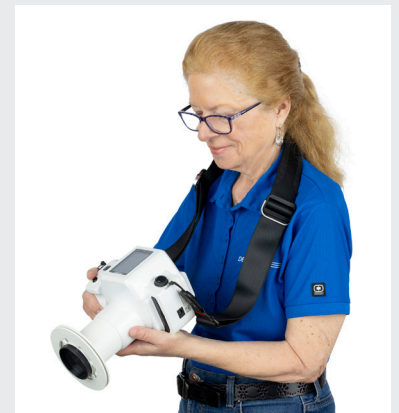
- Lowest patient dose
- Camera type design
- Condensed Al-filtration emission



Backscatter Shield

The permanently attached backscatter shield offers safety protection.

- Blocked leakage radiation
- Sealed x-ray generating part



Neck Strap

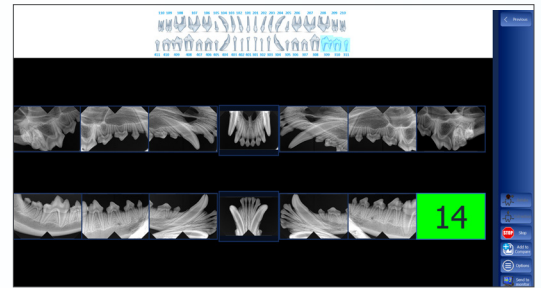
The included neck strap helps operator when holding the x-ray.

- Prevents falls and accidental damages
- Reduces arm strain

The complete imaging system.

Meet your imaging needs with the **Dentalaire Complete Portable Imaging System**. This includes:

- Handheld X-ray Generator
- Dentalaire DTX Laptop
- Size 2 Sensor
- Software and Support
- Mouth Prop Kit



Want to learn more about the DTX Software?

Contact us to schedule a live demo.



Technical Specifications

Unit Dimensions

Height	118 mm
Width	168 mm
Depth	228 mm
Weight	4.4 pounds

X-ray Generator

Tube Voltage	70kV
Tube Current	2mA
Time Setting Range	0.5 - 1.0 second (0.01 second step)

X-ray Tube

Type	Stationary Anode
Focal Size	0.4 mm
Target Angle	12.5°
Total Filtration	2.6 mm Al (Inherent: 1.0 mm Al / Fixed Added: 1.6 mm Al)

X-ray Field

Round Type	70kV
Rectangular Type	30 x 40 mm

Display

Unit	TFT LCD
------	---------

Voltage to Use

Battery	DC 14.8V
Charger	Input: 100~240VAC, 50~60Hz, 0.5A Output: DC16.8V, 1.0A

Warranty

Unit	1 year
Battery	6 months